

Spokane Workforce Development Area

May Report
Presented: June 27, 2008



**Employment
Security
Department**

WASHINGTON STATE

COMMUNITY COLLEGES of SPOKANE

Spokane Community College

Worker Retraining	Summer Quarter 2007	Fall Quarter 2007	Winter Quarter 2008	Spring Quarter 2008
New WR Funding	34	75	94	76
Continued WR Funding	0	7	14	13
Other Funding	74	124	199	154
Apprenticeship	92	343	421	228
Graduates/Completers*	3	6	20	11
Entered Employment 2006-07**	62 grads; 50 employed	***	***	***

* - Graduates/Completers includes *only* those funded by Worker Retraining

** - total includes all graduates/completers funded by WR who entered employment in 2006/2007

*** - data will be available Fall 2008

Spokane Community College

WorkFirst	Summer Qtr 2007	Fall Qtr 2007	Winter Qtr 2008	Spring Qtr 2008
Line 1 - New Enrollees TANF	23	38	22	39
Line 2 - Enrollees TANF	45	108	109	104
Line 3 - Total of Line 1 & 2	68	149	134	147
Line 4 - New Enrollees L.I.W.	7	33	19	20
Line 5 - Total Enrollees L.I.W.	159	274	267	255
Line 6 - Graduates/Completers	5	3	7	28
Line 7 - Entered Employment	11 Grads; 11 employed (LIW only)	*	*	*

Line 1 = New TANF Students funded by WorkFirst.

Line 2 = TANF Students funded by other sources/financial aid *and* being tracked due to EIAS referral.

Line 3 = Total Enrollees on TANF that are being tracked.

Line 4 = New Enrollees Low Income Working - funded by WorkFirst.

Line 5 = Total Enrollees Low Income Working - currently funded by other sources/financial aid but previously funded by WorkFirst.

Line 6 = Graduates/Completers includes *only* those currently funded by WorkFirst.

Line 7 = Summer 07 total includes *only* LIW graduates/completers from 06/07 who entered employment in 06/07 .

Line 7 = Fall 07 through Spring 08 totals not completed until Fall 08.

Spokane Falls Community College

Worker Retraining	Summer Quarter 2007	Fall Quarter 2007	Winter Quarter 2008	Spring Quarter 2008
Line 1 - New Enrollees	8	14	16	13
Line 2 - Total Enrollees	21	45	41	46
Line 4 - Graduates/Completers	4	6	3	22
Line 5 - Entered Employment	30	**	**	**

Line 1 = New Students funded by Worker Retraining

Line 2 = New Enrollees & Continuing Worker Retraining Students funded by WIA, Financial Aid or TECA.

Line 4 = Graduates and/or Completers that were funded by Worker Retraining.

Line 5 = Summer 07 total are graduates/completers from 06/07 that returned surveys and/or information from the DOL Database.

**Fall 07 through Spring 08 totals not available until surveys are completed and wages verified.

Spokane Falls Community College

WorkFirst	Summer Qtr 2007	Fall Qtr 2007	Winter Qtr 2008	Spring Qtr 2008
Line 1 - New Enrollees TANF	4	12	9	5
Line 2 - Enrollees TANF	34	35	42	50
Line 3 - Total of Line 1 & 2	38	47	51	55
Line 4 - New Enrollees L.I.W.	6	14	6	6
Line 5 - Total Enrollees L.I.W.	31	64	66	70
Line 6 - Graduates/Completers	8	*	*	*
Line 7 - Entered Employment	**	**	**	**

Line 1 = New TANF Students funded by WorkFirst.

Line 2 = TANF Students funded by other sources , financial aid and being tracked in EJAS.

Line 3 = Total Enrollees on TANF that are being tracked in EJAS

Line 4 = New Enrollees Low Income Working - funded by WorkFirst.

Line 5 = Total Enrollees Low Income Working - funded by other sources, financial aid.

Line 6 = Graduates/Completers that were referred to SFCC WorkFirst Coordinator. * Tracking report not available.

** Summer 07 through Spring 08 totals not completed until Fall 08.

BUSINESS SOLUTIONS

Spokane WDA

Spokane Industry Cluster Initiative: connecting job seekers with employers showing growth

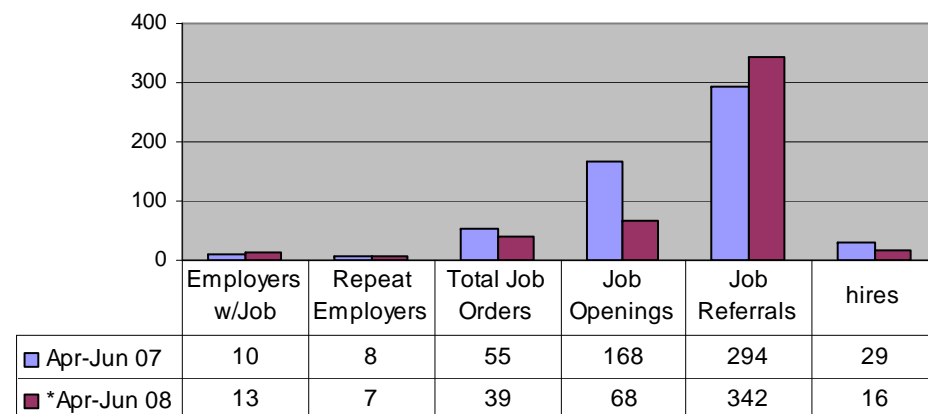
Targeted Industry - Manufacturing

- Manufacturing cluster identified by the Workforce Development Council
- One of the leading industries in terms of new job growth
- Fourth highest paying jobs, easy entry and paid benefits
- Goal – Increase business contacts with manufacturing employers and create opportunities for job seekers and assist employers in developing their workforce

Analysis:

- 82 out of 91 targeted manufacturing employers responded to the survey
- Employers continue to have difficulty finding skilled workers
- WA job orders/openings in manufacturing jobs declining
- 70% of employers that responded to the survey stated they train their staff on the job
- 50% of employers stated their largest challenge was finding a skilled workforce

Manufacturing Initiative



*data available through 6/22/08

Strategies:

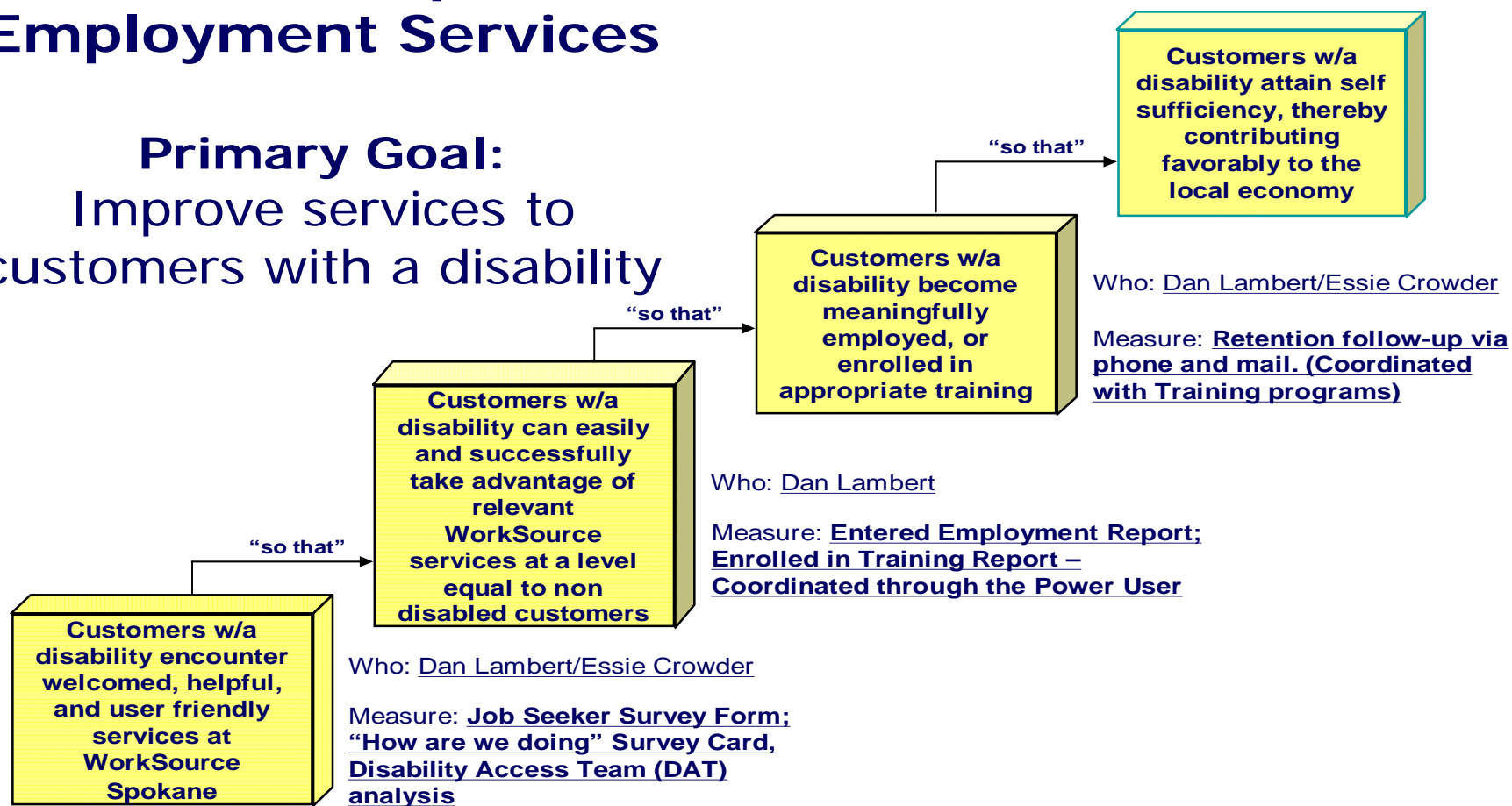
- Continue to evaluate against our job seeker inventory and coordinate with our local Regional Economist
- Market on-the-job training, Apprenticeship opportunities and customized training models to employers for enhanced workforce development
- Enhance partnership with local training providers and Business Solutions Partner Team
- Increase awareness of Business Solutions services to manufacturing employers, resulting in more WA job orders

EMPLOYMENT SERVICES

Employment Services

WorkSource Spokane Employment Services

Primary Goal:
Improve services to
customers with a disability



Services For Customers w/a disability

Situation: Customers w/ a disability expect and need welcomed, helpful and easily accessible services at WorkSource Spokane

Analysis: Disability services at WorkSource must be marketed as user friendly, visible, helpful and easily accessible for disabled customers.

Strategic Goal: “Customer friendly services” for customers w/a disability leading to positive employment and/or training outcomes, and overall community awareness.

Customers w/a disability					Navigator staff activities			
	Served	Placement Goal	Placed on Jobs	Disabled in SKIES	Employer Connections	School Visits	Staff Training	CBO Visits
Feb	138	18	14	919	3	1	3	2
Mar	112	18	16	943	15	2	1	2
Apr	115	18	25	928	0	1	1	2
May	105	18	16	947	10	4	3	8
Jun		18						
Total	470	18	71	947	28	8	8	14

WorkSource Spokane disability data: May'08

Top 10 Services received by customers with a disability:

1. Job Referrals - 102
2. Job Search & Placement Assistance - 63
3. Staff Assisted Job Match - 54
4. Initial Assessment - 37
5. Unemployment Assistance - 19
6. Resume Assistance - 17
7. Labor Market Information - 35
8. Employment Referral - 34
9. Support Services / Transportation - 13
10. Job Search Planning - 23

*100 mailings sent to CBOs

Action Plan:

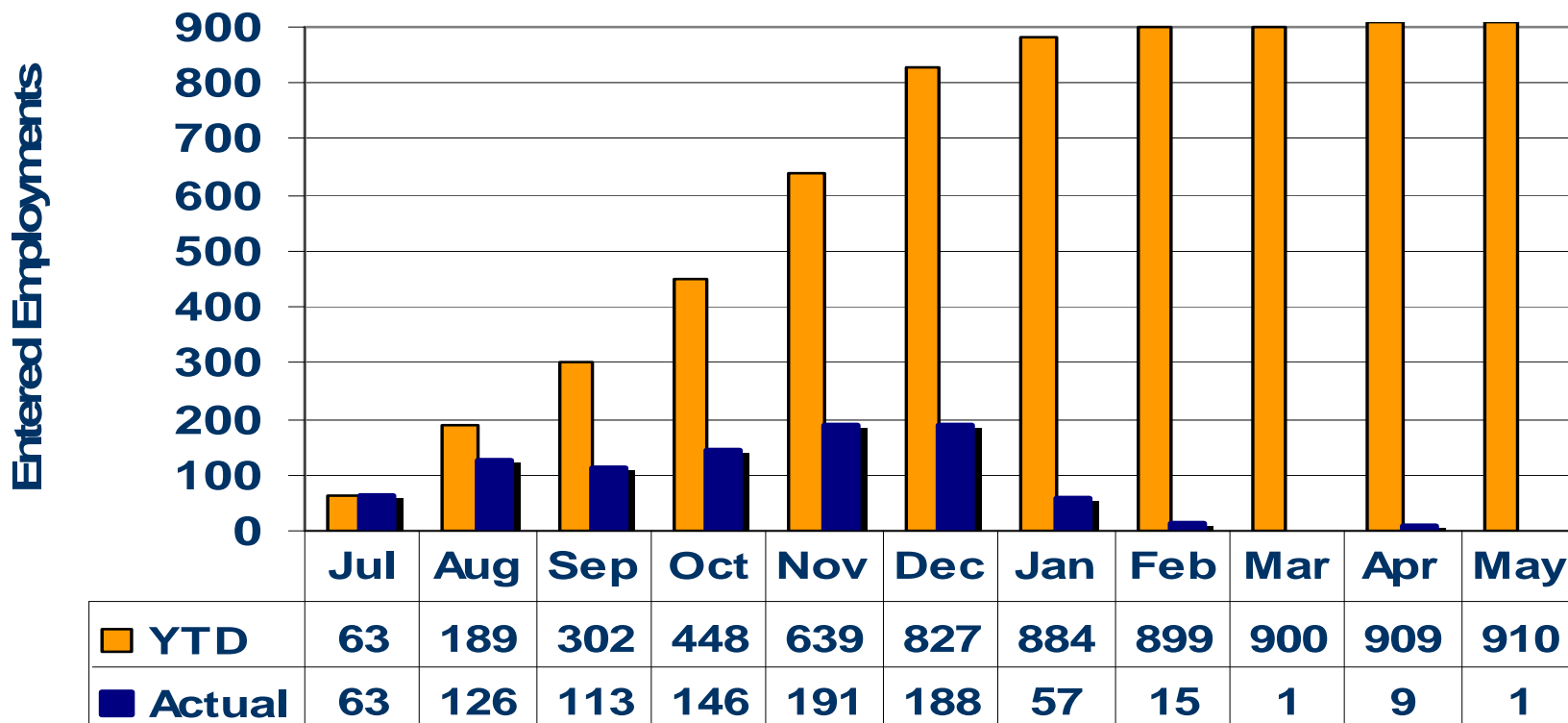
- Disability Navigator staff and DAT analyze initial service delivery path to customers w/a disability
- Implement customer survey
- Initiate necessary changes
- Conduct additional customer survey with same customers
- Monitor Entered Employment and Enrolled In Training Reports
- Market WorkSource Disability Services to CBOs, Schools and Employers serving the disabled
- Perform retention follow up

Employment Services

Job Match Initiative (JMI) PY07

Target = 200 Entered Employments

YTD Entered Employments = 910 or 455% of Target

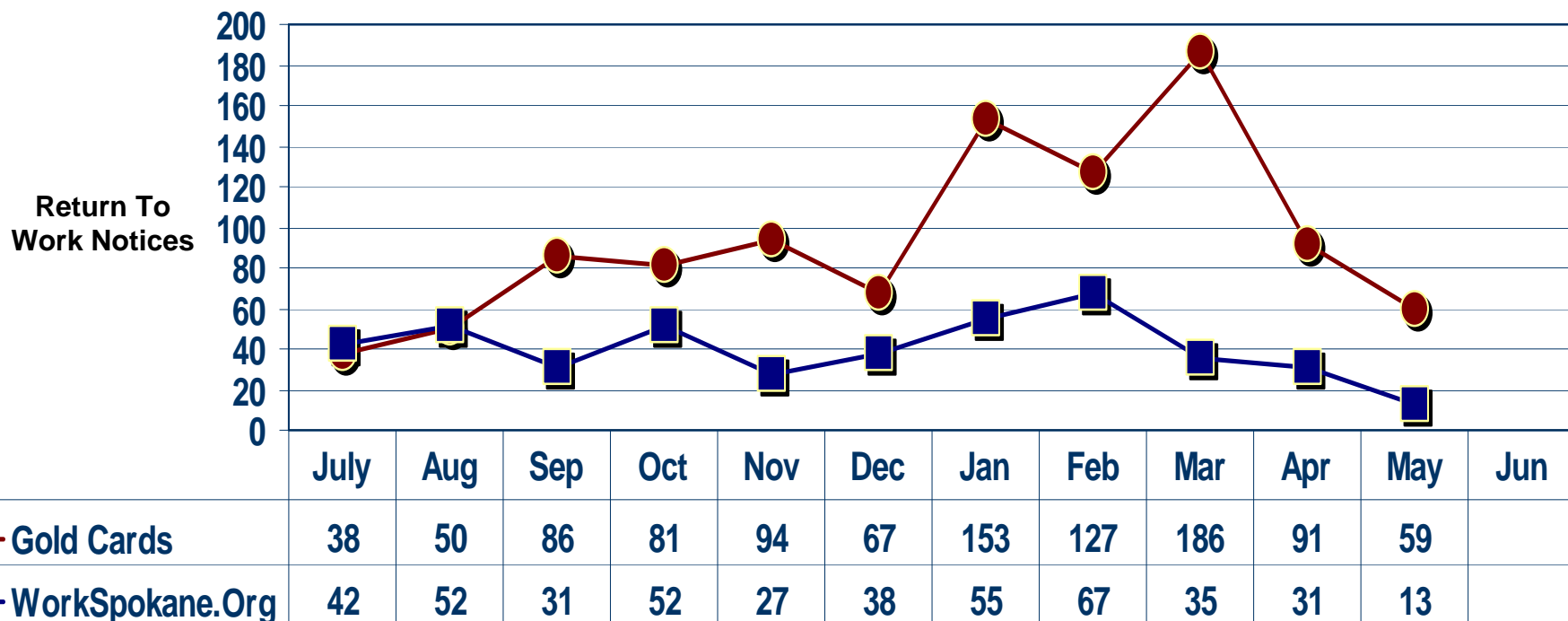


Employment Services

Return to work notices received from customers.

Notices received via Gold Cards YTD: 1032

Notices received via WorkSpokane.Org YTD: 443



WORKFIRST

WorkFirst – Limited English Proficiency

WorkFirst Limited English Proficiency Employment Services Program

	YTD 05/31/08
Assessments / Employment Plans	128
Initial Placements	72
Initial Employment Rate	56%
30 day Employment Retention	61
30 day Employment Retention Rate	84%

WorkFirst Career Services

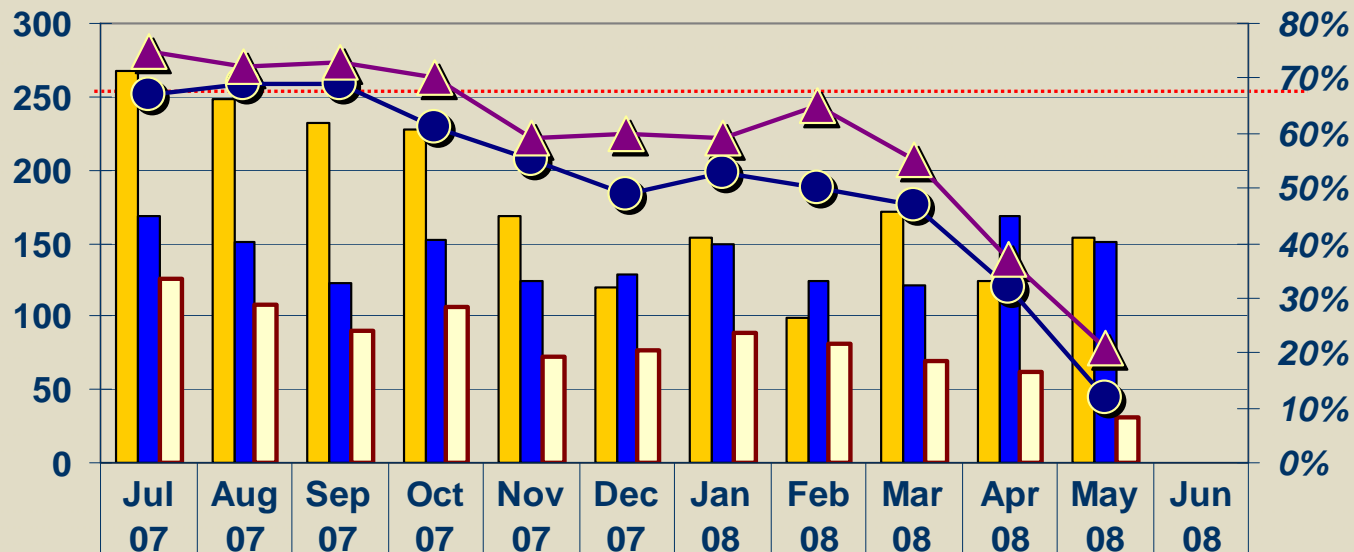
Comprehensive Evaluations Scheduled 01/28/08 - 05/31/08

	Jan.	Feb.	Mar.	Apr.	May
Parents Assessed at WorkSource	286	259	278	306	278
Parent Interpretations	282 - 99%	249 - 96%	271 - 97%	292 - 95%	270 - 97%
Recommended Job Search	151 - 53%	127 - 51%	207 - 76%	231 - 79%	210 - 77%
Enrolled In Job Search	184	136	143	212	159

WorkFirst

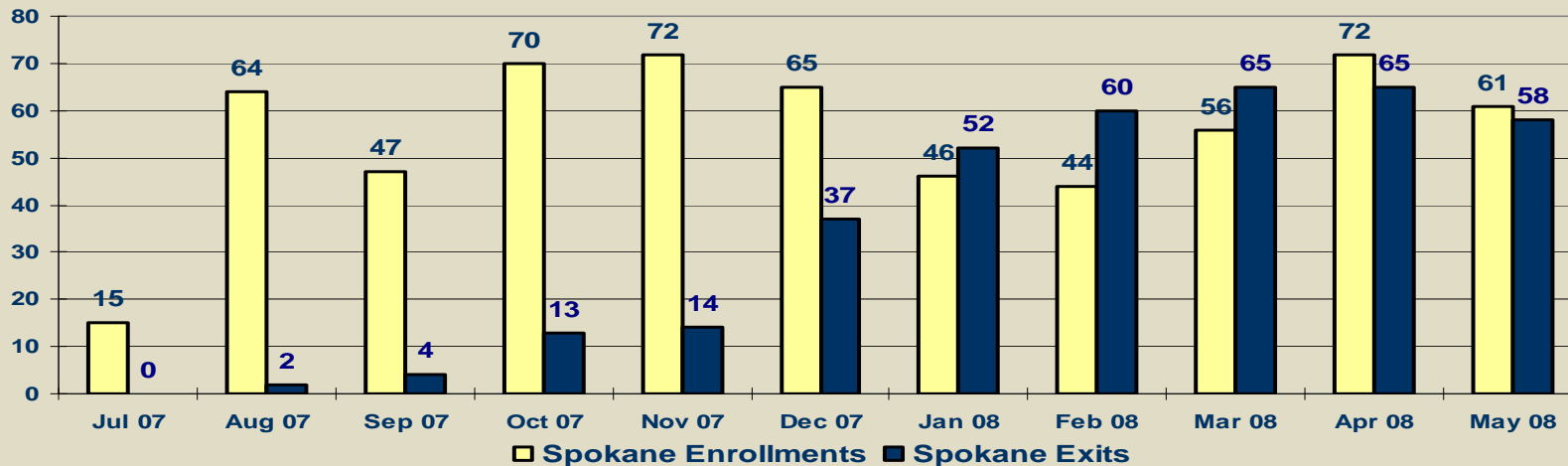
Entered Employments PY 07

Entered Employment Goal: 67%
YTD Average for Spokane: 73%

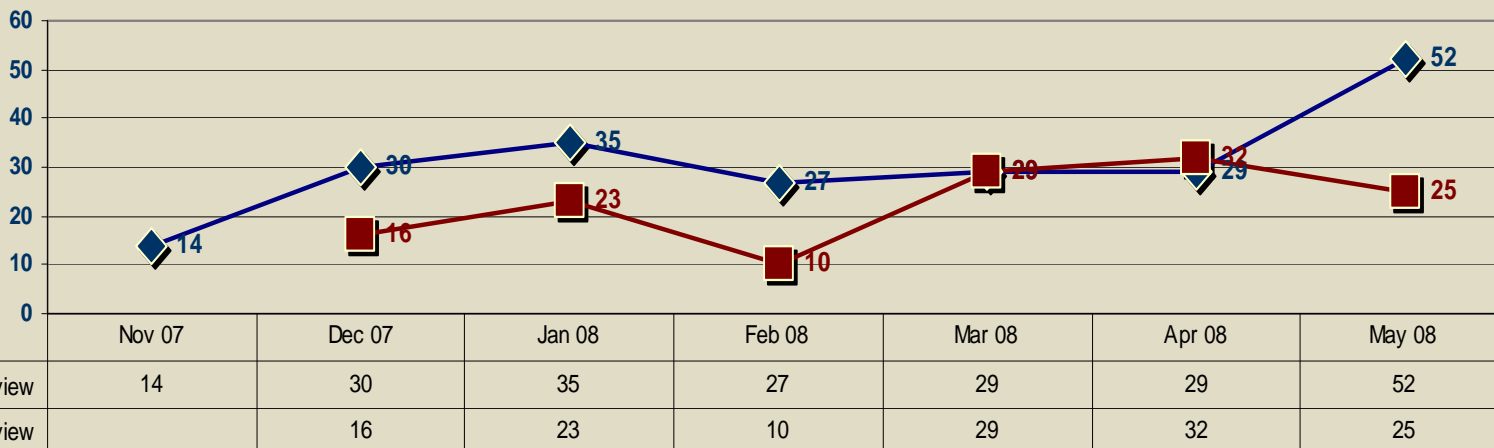


E-JAS Entered Employment	267	248	232	227	169	120	154	99	171	124	154	
GMAP Cohort	168	151	123	152	124	129	149	124	121	168	151	
GMAP Entered Employment	126	108	90	106	73	77	88	81	69	62	31	
State %	67%	69%	69%	61%	55%	49%	53%	50%	47%	32%	12%	
Spokane %	75%	72%	73%	70%	59%	60%	59%	65%	55%	37%	21%	

WorkFirst Career Services



Year To Date: Enrollments – 612, Exits – 379



Legend: —◆— 4 Month Interview —■— 6 Month Interview

Year To Date: 4-Month – 216 6-Month - 135

Workforce Investment Act (WIA)

WIA Adult Program PY07

Contracted Performance Measures - Cumulative 7/1/07 - 6/30/08

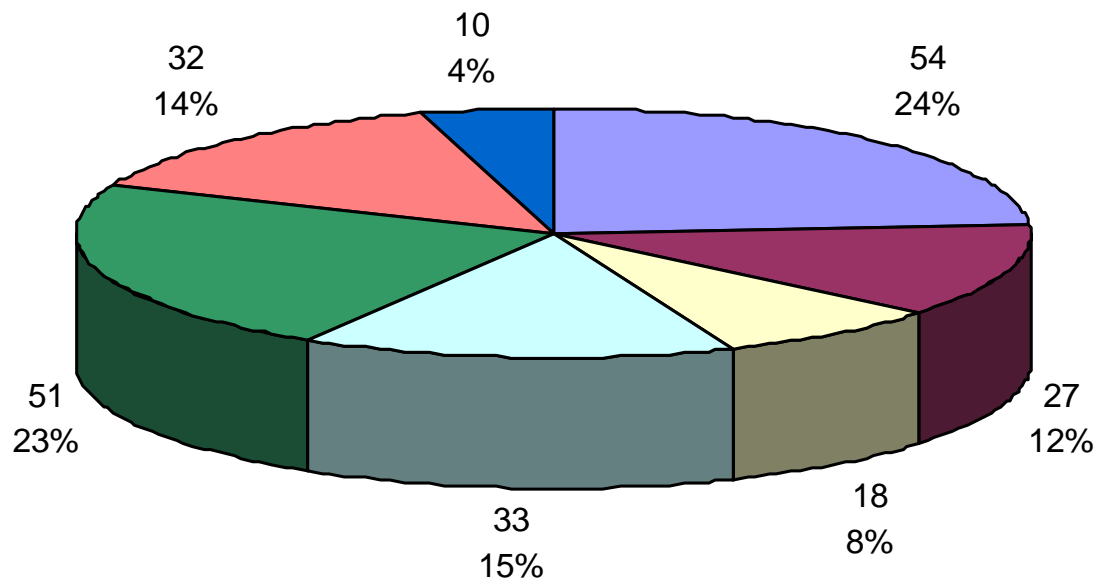
Yellows is Mod (Carry-in): 138

Total Participants	July	Aug	Sept	Oct	Nov	Dec	Jan	Feb	Mar	Apr	May	June
Total Served - Planned	159	193	254	268	299	323	346	377	404	349	368	386
Total Served - Actual	166	190	220	247	270	308	349	374	396	427	447	
	104%	98%	87%	92%	90%	95%	101%	99%	98%	122%	121%	0%
New Registrants Planned	21	55	116	130	161	185	208	239	266	211	230	248
New Registrants Actual	28	52	82	109	132	170	211	236	258	289	309	
% of plan	133%	95%	71%	84%	82%	92%	101%	99%	97%	137%	134%	#VALUE!
Exits	July	Aug	Sept	Oct	Nov	Dec	Jan	Feb	Mar	Apr	May	June
Total Exits Planned	16	44	71	104	146	178	192	221	243	200	235	270
Total Exits Actual	23	46	71	90	100	122	139	161	186	208	238	0
% of plan	144%	105%	100%	87%	68%	69%	72%	73%	77%	104%	101%	0%
Placement Planned	16	44	69	99	137	166	178	205	225	180	212	243
Placement Actual	23	46	70	89	99	121	136	158	182	195	222	
% of plan	144%	105%	101%	90%	72%	73%	76%	77%	81%	108%	105%	0%
Other Exits Actual	0	0	1	1	1	1	3	3	3	11	14	
Neutral Exits	0	0	0	0	0	0	0	0	1	2	2	
Wage at Placement	July	Aug	Sept	Oct	Nov	Dec	Jan	Feb	Mar	Apr	May	June
Planned	\$11.00	\$11.00	\$11.00	\$11.00	\$11.00	\$11.00	\$11.00	\$11.00	\$11.00	\$11.00	\$11.00	\$11.00
Actual	\$11.91	\$11.48	\$11.61	\$11.97	\$12.12	\$11.91	\$11.96	\$12.10	\$12.09	\$12.10	\$11.98	
% of plan	108%	104%	106%	109%	110%	108%	109%	110%	110%	110%	109%	0%
Expenditures	July	Aug	Sept	Oct	Nov	Dec	Jan	Feb	Mar	Apr	May	June
Planned	\$68,973	\$137,946	\$206,919	\$275,892	\$344,865	\$413,838	\$482,811	\$551,784	\$620,757	\$689,730	\$758,703	\$861,899
Actual	\$43,663	\$107,855	\$125,736	\$196,155	\$214,045	\$273,843	\$310,369	\$365,090	\$430,174	\$487,983	\$517,993	
% of plan	63%	78%	61%	71%	62%	66%	64%	66%	69%	71%	68%	0%

Service Providers: Career Path Services and Employment Security

WIA Adult Program PY07

Unsubsidized Employment Information by Industry



- **Healthcare - Avg Wage: \$10.91, Training Related Placements: 28**
- **Manufacturing - Avg Wage: \$12.09, Training Related Placements: 7**
- **Construction - Avg Wage: \$13.89, Training Related Placements: 8**
- **Retail - Avg Wage: \$11.12, Training Related Placements: 3**
- **Business Services - Avg Wage: \$10.85, Training Related Placements: 10**
- **Transportation - Avg Wage: \$13.94, Training Related Placements: 18**
- **Other Industries (Natural Resources, Utilities, Government/Education) - Avg Wage: \$17.54, Training Related Placements: 3**

Service Providers: Career Path Services and Employment Security

WIA Dislocated Worker Program PY07

Contracted Performance Measures - Cumulative 7/1/07 - 6/30/08

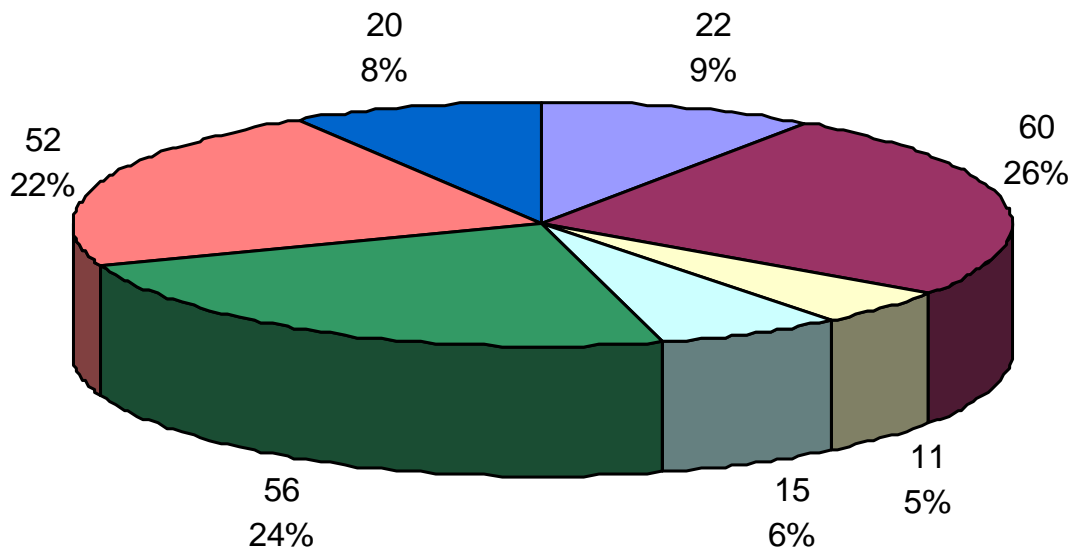
Yellow is Mod (Carry-in): 170

Total Participants	July	Aug	Sept	Oct	Nov	Dec	Jan	Feb	Mar	Apr	May	June
Total Served - Planned	196	234	296	324	366	394	430	462	495	435	450	472
Total Served - Actual	185	205	225	251	275	314	344	380	433	454	492	
	94%	88%	76%	77%	75%	80%	80%	82%	87%	104%	109%	0%
New Registrants Planned	26	64	126	154	196	224	260	292	325	265	280	302
New Registrants Actual	15	35	55	81	105	144	174	210	263	284	322	
% of plan	58%	55%	44%	53%	54%	64%	67%	72%	81%	107%	115%	#VALUE!
Exits	July	Aug	Sept	Oct	Nov	Dec	Jan	Feb	Mar	Apr	May	June
Total Exits Planned	25	70	105	145	192	233	254	281	318	250	300	330
Total Exits Actual	32	65	77	93	111	136	154	164	184	208	229	0
% of plan	128%	93%	73%	64%	58%	58%	61%	58%	58%	83%	76%	0%
Placement Planned	22	64	96	133	177	215	233	257	291	222	229	297
Placement Actual	32	65	77	93	111	136	152	161	180	200	220	
% of plan	145%	102%	80%	70%	63%	63%	65%	63%	62%	90%	96%	0%
Other Exits Actual	0	0	0	0	0	0	1	2	2	6	6	
Neutral Exits	0	0	0	0	0	0	1	1	2	2	2	
Wage at Placement	July	Aug	Sept	Oct	Nov	Dec	Jan	Feb	Mar	Apr	May	June
Planned	\$14.00	\$14.00	\$14.00	\$14.00	\$14.00	\$14.00	\$14.00	\$14.00	\$14.00	\$14.00	\$14.00	\$14.00
Actual	\$15.67	\$15.36	\$15.45	\$15.31	\$15.58	\$15.38	\$15.59	\$15.78	\$15.85	\$15.72	\$15.50	
% of plan	112%	110%	110%	109%	111%	110%	111%	113%	113%	112%	111%	0%
Expenditures	July	Aug	Sept	Oct	Nov	Dec	Jan	Feb	Mar	Apr	May	June
Planned	\$87,277	\$174,554	\$261,831	\$349,108	\$436,385	\$523,662	\$610,939	\$698,216	\$785,493	\$872,770	\$960,047	\$1,059,558
Actual	\$42,408	\$103,928	\$117,028	\$171,141	\$208,802	\$278,102	\$327,838	\$401,581	\$477,435	\$522,646	\$570,944	
% of plan	49%	60%	45%	49%	48%	53%	54%	58%	61%	60%	59%	0%

Service Providers: Career Path Services and Employment Security

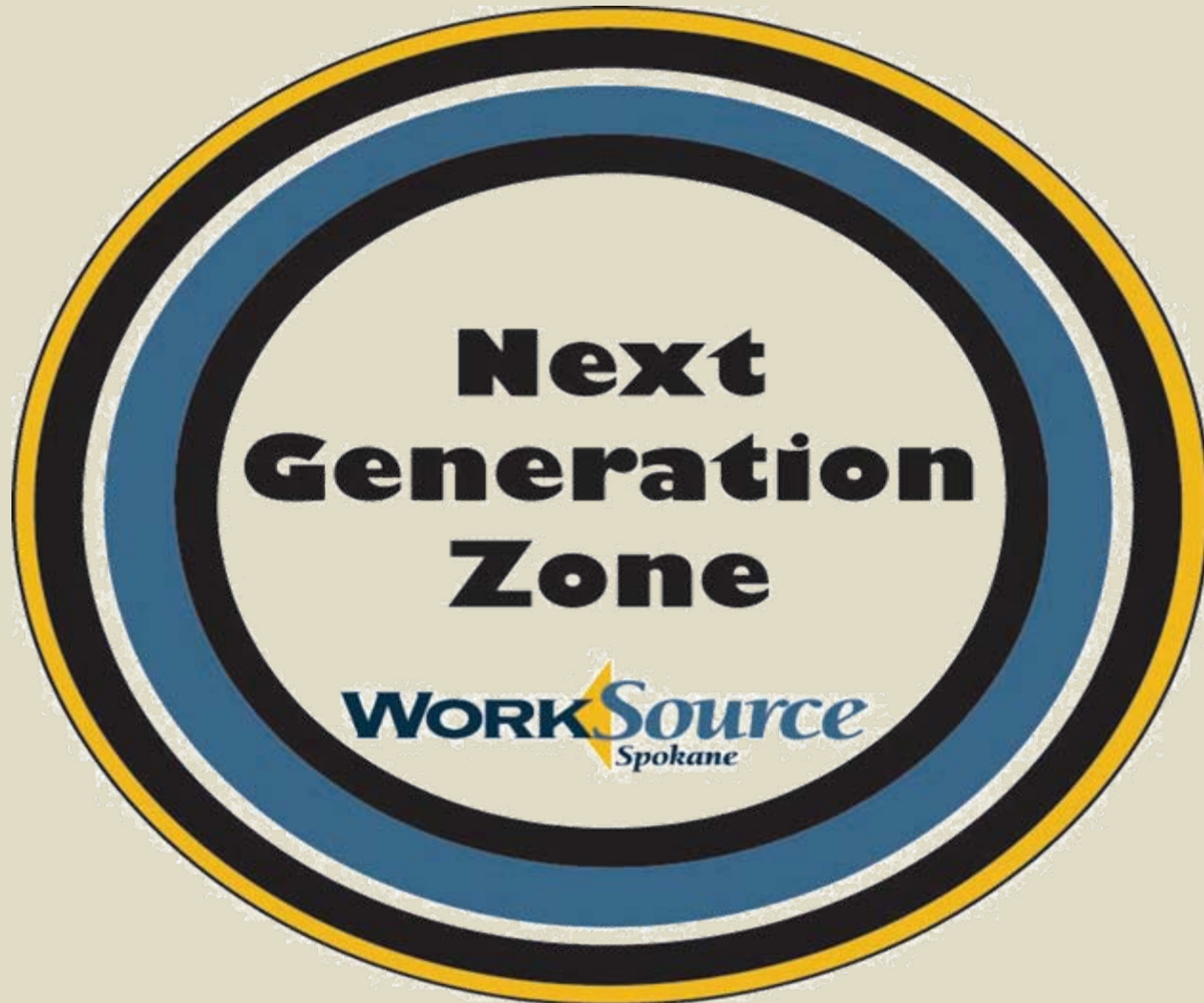
WIA Dislocated Worker Program PY07

Unsubsidized Employment Information by Industry



- **Healthcare - Avg Wage: \$15.26, Training Related Placements: 10**
- **Manufacturing - Avg Wage: \$15.50, Training Related Placements: 25**
- **Construction - Avg Wage: \$15.00, Training Related Placements: 5**
- **Retail - Avg Wage: \$11.76, Training Related Placements: 1**
- **Business Services - Avg Wage: \$15.02, Training Related Placements: 18**
- **Transportation - Avg Wage: \$16.32, Training Related Placements: 22**
- **Other Industries (Natural Resources, Utilities, Government/Education) - Avg Wage: \$36.47, Training Related Placements: 8**

WIA Youth Program



Next Generation Zone

Situation:

- Exceeding new enrollments/total enrollments plans for May at 108%.
- Only slightly under expended at 96% of plan.
- Exits are still not at planned levels but a revised plan is in place with a June 30th target and positive exits are pouring in with high school completions, GED and employment verification.
- Outcome Data indicates that Exits who received only Core or Intensive Services had a wage at placement of \$8.30/hour, while Exits that received Training placed at \$9.08/hour. 95% of unsubsidized employment exits received training services!
- Full utilization of training resources is an essential strategy for higher quality/higher wage exits. Positive Exit Rate of 91% and 80 youth have completed high school diploma or GED!!

Analysis:

- Traffic to Next Gen Zone has been steady with all indications from comparative data provided by Carri Callaghan implies a 14% increase in the number of youth job seekers coming into WorkSource Spokane since July 1, 2007.
- Redirection of Business Solutions team member to program services will begin July 1st.
- It's continues to be all good...

Plan of Action:

- Some tools for informing applicants about Job Zone 1 and Job Zone 2 options have been developed and will be shared with staff in June.
- Two new staff positions within the Next Generation Zone beginning July 1st that will focus on workshops for youth, follow up activities to keep them employed, documentation of credentials to meet post-exit Common Measures/Performance Standards
-

Persons Responsible: Cami Hanson, Anne Millane

Next Generation Zone

Workforce Investment Act - Youth Program PY07

Contracted Performance Measures - Cumulative 7/1/07 - 6/30/08

Yellow is Mod (Carry-in): 222

Total Participants	July	Aug	Sept	Oct	Nov	Dec	Jan	Feb	Mar	Apr	May	June
Total Served - Planned	250	279	306	336	365	392	421	449	490	500	500	500
Total Served - Actual	236	256	273	317	355	379	439	465	501	516	540	
	94%	92%	89%	94%	97%	97%	104%	104%	102%	103%	108%	0%
Not Low Income (5% Max)	6	7	10	12	12	12	14	14	16	17	19	
% of Total Served	3%	3%	4%	4%	3%	3%	3%	3%	3%	3%	4%	#DIV/0!
New Registrants Planned	28	57	84	114	143	170	199	227	268	276	278	278
New Registrants Actual	14	34	51	95	133	157	217	243	279	294	318	
% of plan	50%	60%	61%	83%	93%	92%	109%	107%	104%	107%	114%	#VALUE!
Exits	July	Aug	Sept	Oct	Nov	Dec	Jan	Feb	Mar	Apr	May	June
Total Exits Planned	23	48	104	132	145	184	211	258	285	276	303	332
Total Exits (Actuals - Neutrals)	21	32	43	68	80	87	114	139	153	171	180	0
% of plan	91%	67%	41%	52%	55%	47%	54%	54%	54%	62%	59%	0%
Employment Placement Planned	18	35	51	72	77	106	122	138	161	160	180	200
Employment Placement Actual	18	29	38	56	63	69	82	95	110	126	131	
% of plan	100%	83%	75%	78%	82%	65%	67%	69%	68%	79%	73%	0%
% of Total Exits Employed	86%	91%	88%	82%	0.7875	79%	72%	68%	72%	74%	73%	#DIV/0!
Other Positive Exits Planned	3	9	47	52	58	65	73	100	100	77	81	99
Other Positive Exits Actual	3	3	6	7	12	12	21	29	28	28	33	
% of plan	100%	33%	13%	13%	21%	18%	29%	29%	28%	36%	41%	0%
Non-Positive Exits Planned	2	4	6	8	10	13	16	20	24	27	30	33
Non-Positive Exits Actual	0	0	0	3	3	4	9	13	13	15	14	
Neutral Exits	0	0	1	2	2	2	2	2	2	2	2	
Wage at Placement	July	Aug	Sept	Oct	Nov	Dec	Jan	Feb	Mar	Apr	May	June
Planned	\$9.00	\$9.00	\$9.00	\$9.00	\$9.00	\$9.00	\$9.00	\$9.00	\$9.00	\$9.00	\$9.00	\$9.00
Actual	\$9.00	\$9.24	\$9.29	\$9.10	\$9.06	\$9.03	\$9.23	\$9.26	\$9.20	\$9.12	\$9.04	
% of plan	100%	103%	103%	101%	101%	100%	103%	103%	102%	101%	100%	0%
Expenditures	July	Aug	Sept	Oct	Nov	Dec	Jan	Feb	Mar	Apr	May	June
Planned	\$79,225	\$163,140	\$247,055	\$330,970	\$414,885	\$498,800	\$582,715	\$666,630	\$750,545	\$834,460	\$904,375	\$1,037,978
Actual	\$79,361	\$171,772	\$250,364	\$368,021	\$438,701	\$515,220	\$564,920	\$644,158	\$685,805	\$799,882	\$869,335	
% of plan	100%	105%	101%	111%	106%	103%	97%	97%	91%	96%	96%	0%

Youth Targets

In School Youth - 42%
Out of School Youth - 58%

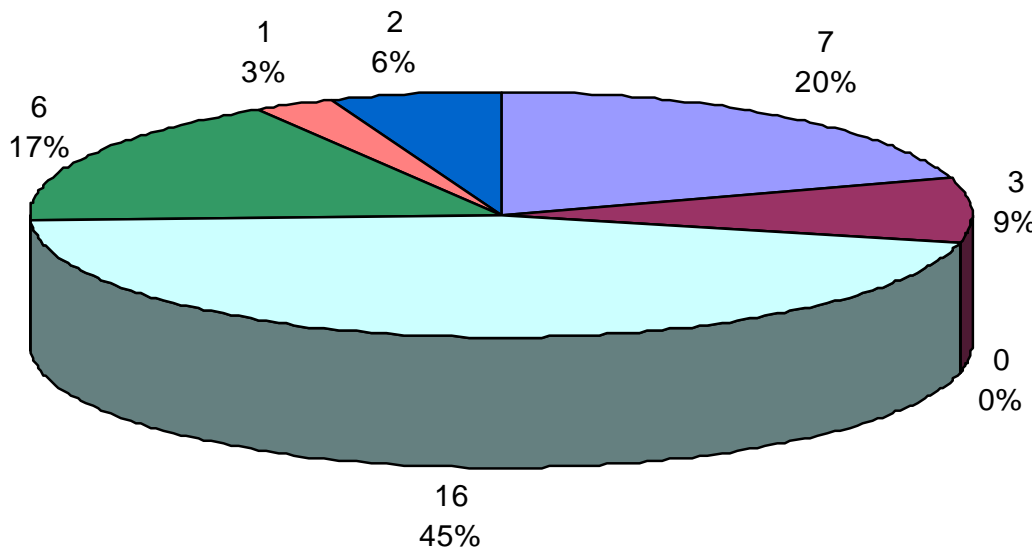
Younger Youth [14 - 18] - 60%
Older Youth [19-21] - 40%

Not Low Income (Max of) - 5%

Service Providers: Career Path Services, Educational Service District 101, Goodwill Industries of the Inland NW

WIA In School Youth Program PY07

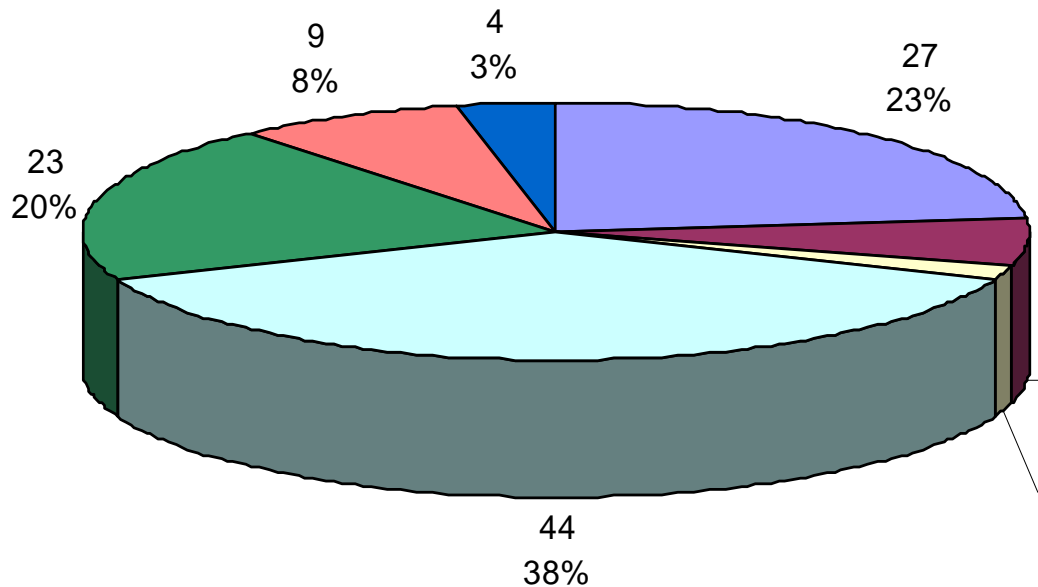
Unsubsidized Employment Information by Industry



- **Healthcare - Avg Wage: \$8.68, Training Related Placements: 4**
- **Manufacturing - Avg Wage: \$10.50, Training Related Placements: 1**
- **Construction - Avg Wage: \$0.00, Training Related Placements: 0**
- **Retail - Avg Wage: \$8.19, Training Related Placements: 3**
- **Business Services - Avg Wage: \$8.10, Training Related Placements: 2**
- **Transportation - Avg Wage: \$8.50, Training Related Placements: 1**
- **Other Industries (Natural Resources, Utilities, Government/Education) - Avg Wage: \$11.37, Training Related Placements: 1**

WIA Out of School Youth Program PY07

Unsubsidized Employment Information by Industry



- **Healthcare - Avg Wage: \$9.60, Training Related Placements: 17**
- **Manufacturing - Avg Wage: \$10.18, Training Related Placements: 2**
- **Construction - Avg Wage: \$12.55, Training Related Placements: 1**
- **Retail - Avg Wage: \$8.59, Training Related Placements: 4**
- **Business Services - Avg Wage: \$8.40, Training Related Placements: 0**
- **Transportation - Avg Wage: \$9.28, Training Related Placements: 2**
- **Other Industries (Natural Resources, Utilities, Government/Education) - Avg Wage: \$10.76, Training Related Placements: 1**

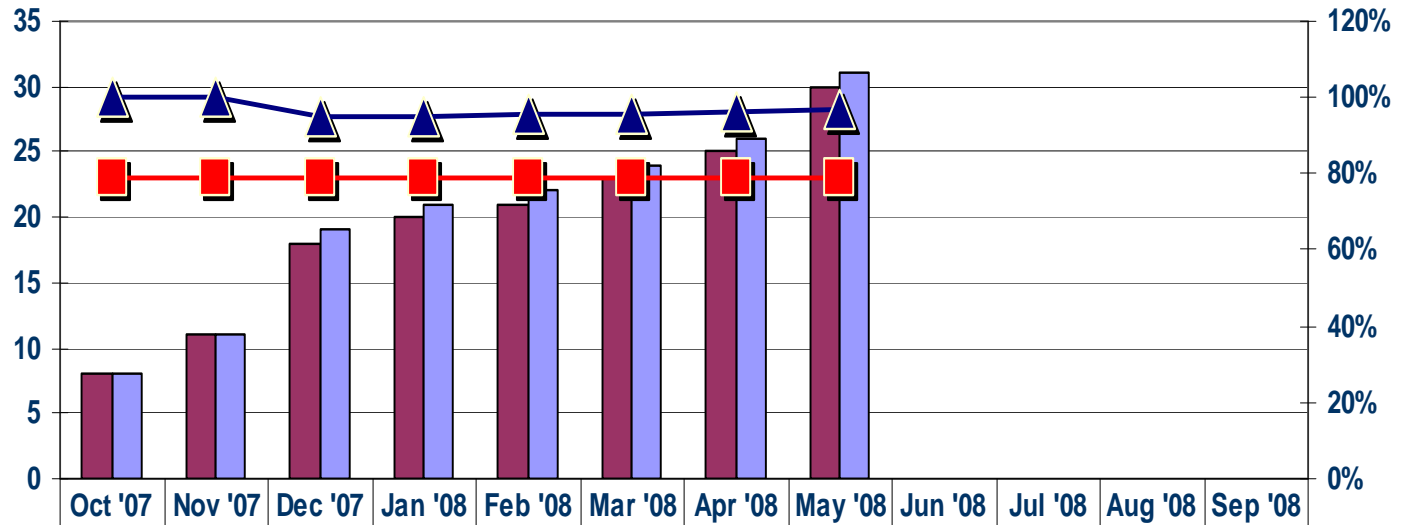
Service Providers: Career Path Services, Educational Service District 101, Goodwill Industries of the Inland NW

Trade Act Assistance (TAA)

Trade Act Assistance

TAA Fiscal 07 Placement Performance 10/01/07 to 09/30/08

TAA Fiscal '06 Placement Performance 10/01/06 to 9/30/08



	Oct '07	Nov '07	Dec '07	Jan '08	Feb '08	Mar '08	Apr '08	May '08	Jun '08	Jul '08	Aug '08	Sep '08
Placement	8	11	18	20	21	23	25	30				
Exits	8	11	19	21	22	24	26	31				
Cumulative Percent Placed	100%	100%	95%	95%	95%	96%	96%	97%				
Goal	79%	79%	79%	79%	79%	79%	79%	79%				

Trade Act Assistance

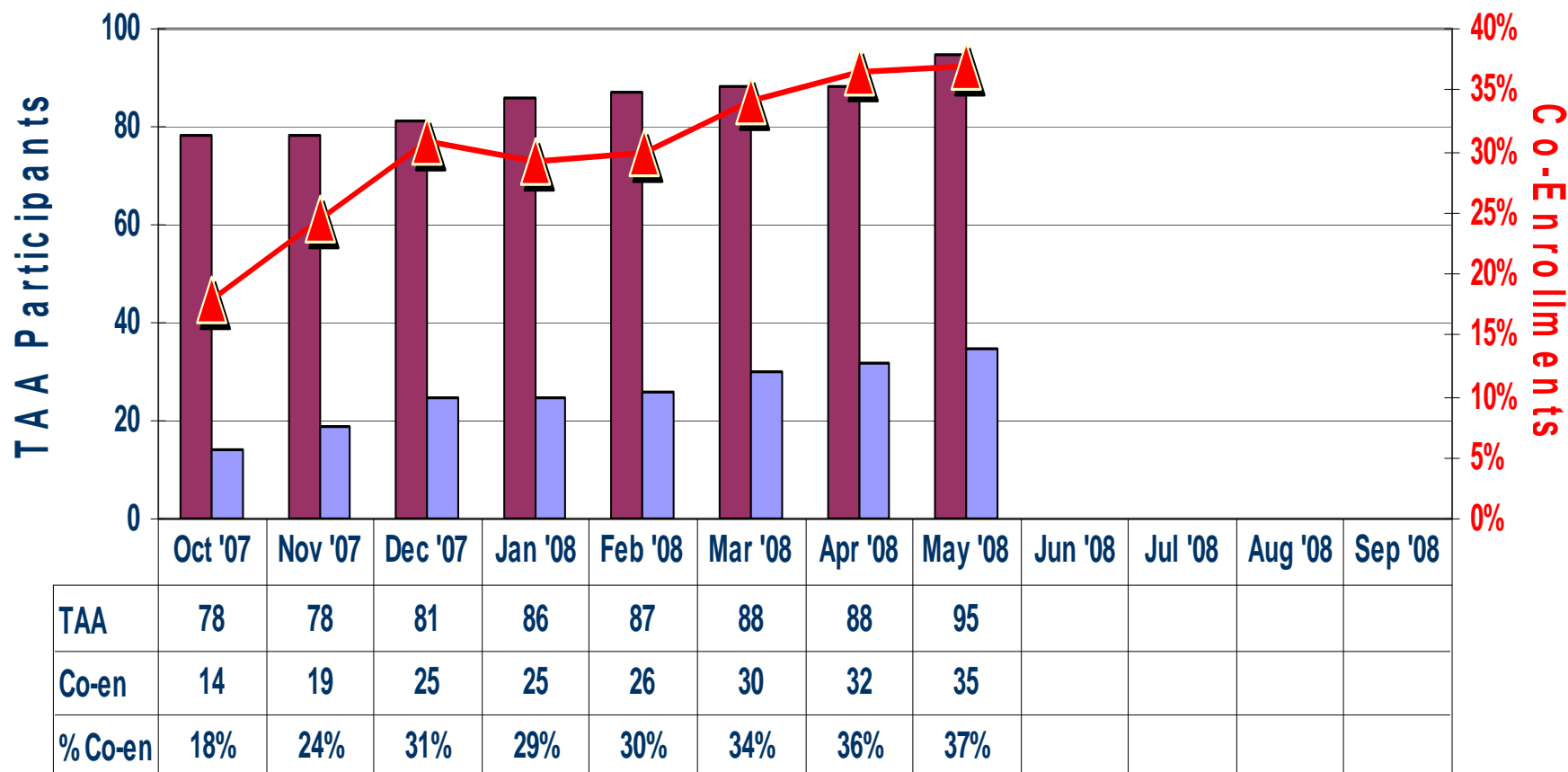
TAA Fiscal 07 Wage Performance

10/01/07 to 09/30/08

	Oct '07	Nov '07	Dec '07	Jan '08	Feb '08	Mar '08	Apr '08	May '08	Jun '08	Jul '08	Aug '08	Sep '08
Total served	78	78	81	86	87	88	88	95				
Employed at exit	8	11	18	20	21	23	26	30				
Pre-wage average	\$28.63	\$29.27	\$26.96	\$26.57	\$25.94	\$25.56	\$24.95	\$23.85				
Post-wage average	\$25.41	\$24.72	\$24.16	\$24.15	\$23.54	\$23.49	\$23.22	\$22.47				
Wage recovery goal	86%	86%	86%	86%	86%	86%	86%	86%				
Actual recovery %	88.8%	84.5%	89.6%	90.9%	90.7%	91.9%	93.1%	94.0%				
Attained recognized credentials	3	5	11	12	13	14	15	17				
Training related placements	4	6	10	11	12	13	14	15				
Average weeks on program	42	61	77	74	74	71	73	75				
Types of training												
Business Services	1	3	3	4	4	4	5	7				
Healthcare	2	3	5	5	6	6	6	8				
Manufacturing	1	1	2	2	2	2	2	2				

Trade Act Assistance

TAA Fiscal '07 Co-Enrollments With WIA Dislocated Workers 10/01/07 to 09/30/08



VETERANS SERVICES

Veterans Services

Veterans Case Management ~ 2007/2008

Veterans Case Management ~ 2007/2008												
Total Participants	July	Aug	Sept	Oct	Nov	Dec	Jan	Feb	Mar	Apr	May	June
VR&E Program	9	13	13	15	17	13	14	15	14	14	18	
RealLifelines Program	4	1	1	1	1	1	2	3	4	4	4	
VIP Program	10	11	10	5	1	2	7	12	9	9	10	
DVOP Program (Intensive)	15	18	22	22	22	23	32	41	39	43	45	
Total Participants	38	43	46	43	41	39	55	71	66	70	77	
New Cases	July	Aug	Sept	Oct	Nov	Dec	Jan	Feb	Mar	Apr	May	June
VR&E Program	2	4	0	5	3	0	2	1	0	4	1	
RealLifelines Program	0	0	0	0	0	0	1	1	0	0	1	
VIP Program	2	1	3	0	0	2	5	0	2	1	1	
DVOP Program (Intensive)	3	4	4	1	1	1	11	0	6	2	1	
Total New Cases	7	9	7	6	4	3	19	2	8	7	4	
Exits	July	Aug	Sept	Oct	Nov	Dec	Jan	Feb	Mar	Apr	May	June
VR&E Program	0	0	3	1	4	1	2	0	0	1	3	
RealLifelines Program	3	0	0	0	0	0	0	0	0	0	0	
VIP Program	0	4	5	4	1	0	3	2	0	0	7	
DVOP Program (Intensive)	1	0	1	1	0	2	1	2	0	6	9	
Total Exits	4	4	9	6	5	3	6	4	0	7	19	

Thank You!

See you at the next GMAP ~

July 25, 2008