

R6V Series

(R6VN, R6VB, R6VC)

Machines Manufactured before March of 1996

Serial Numbers up to R6V001328 Also,

RV001351 to R6V001359

R6V001361 to R6V001370

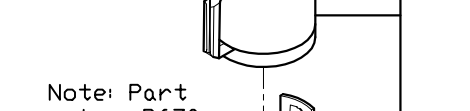
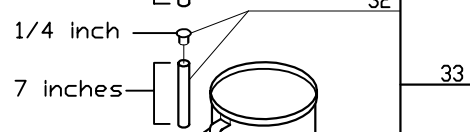
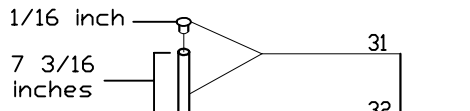
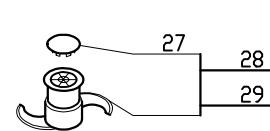
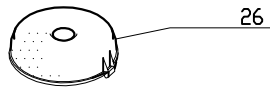
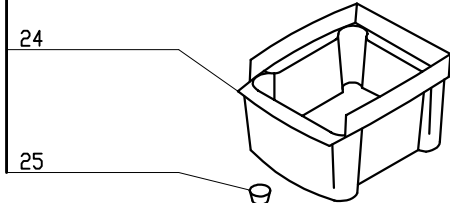
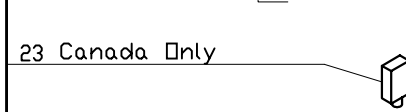
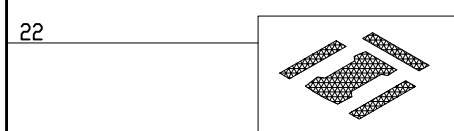
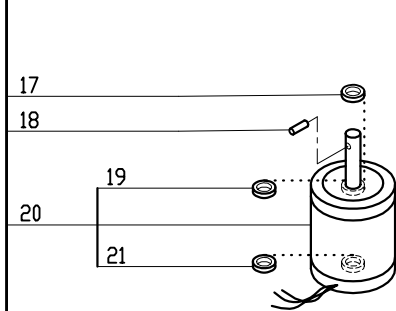
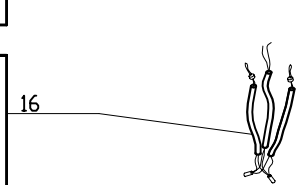
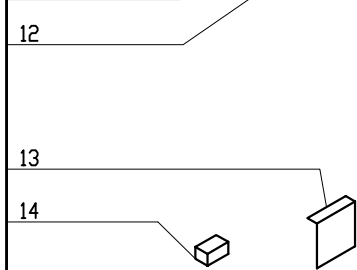
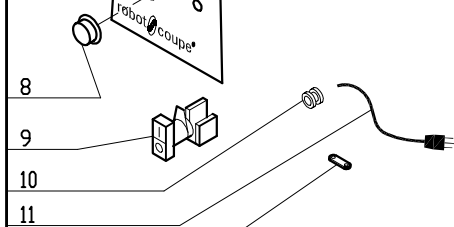
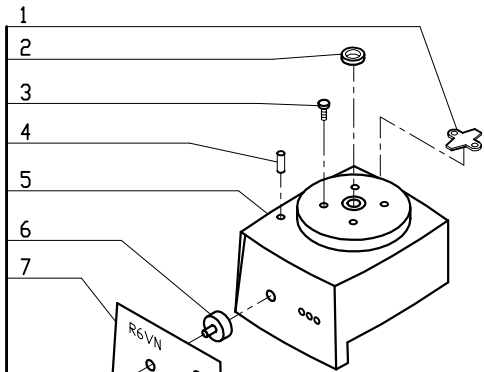
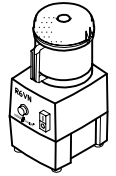
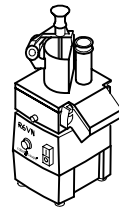
R6V001386 to R6V001395

R6V001534 to R6V001545

120 Volt, 1 Phase, 60Hz.

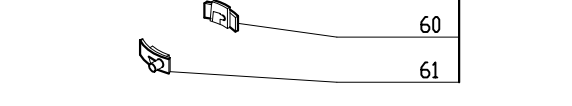
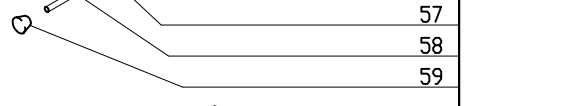
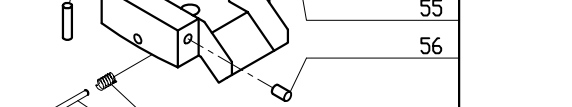
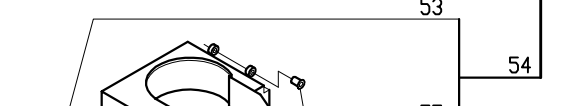
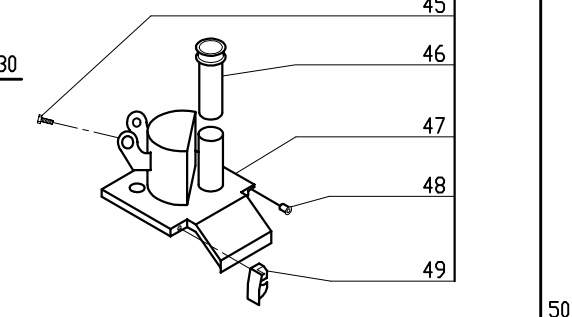
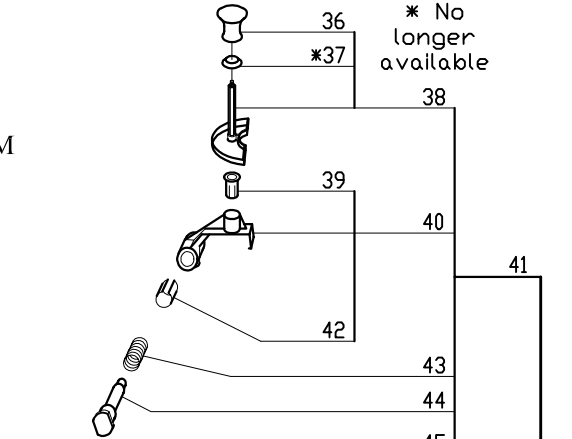
Variable Speed-370-3450 RPM

Use C Designated Plates.



Note: Part number R670 with plastic caps, part number R3070U, is no longer available.

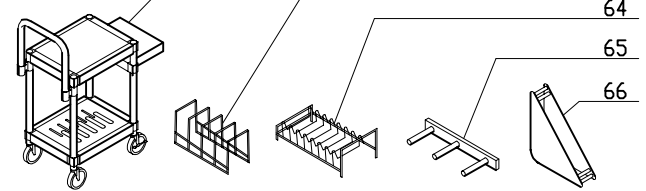
The replacement part number R670, incorporates a metal plug cap.



* No longer available

ACCESSORIES

NOTE: Use "C" designated plates.



* No longer available

| INDEX | REF. | DESIGNATION | Pricelist in : USD |
|-------|--------|-----------------------------|--------------------|
| 1 | R484 | Stop Pad | |
| 2 | R611 | Motor Support Seal | |
| 3 | R232 | Motor Support Screw | |
| 4 | RV613 | Shield | |
| 5 | R610 | Motor Support | |
| 6 | RV6043 | Speed Control Pot. | |
| 7 | RV612 | Front Data Plate - R6VN | |
| 8 | RV614 | Switch Knob | |
| 9 | R3018 | On/Off Switch | |
| 10 | R496G | Gromet (Elect Cord) | |
| 11 | R496 | Cord W/Plug (R4X,S,P,Y) | |
| 12 | R233 | Strain Relief | |
| 13 | RV6041 | PC Board W/Switch | |
| 14 | R664S | Relay DPST | |
| 15 | RV699 | No Longer Available | |
| 16 | C420P | Mag Swtch w/Hse (2 prl) | |
| 17 | R604S | Seal, Motor | |
| 18 | R492A | Shaft Pin (new style) | |
| 19 | R662 | Bearing, Motor Top | |
| 20 | RV604 | Motor Only (Old Style R6VN) | |
| 21 | R1540 | Bearing (6206) | |
| 22 | R498 | Screen Kit (R4N,X,S,Y) | |
| 23 | RB497 | 15amp Breaker (CSA) | |
| 24 | R493F | R4 Base (French) | |
| 25 | R402F | Foot (French) | |
| 26 | R546 | Bowl Lid | |
| 27 | R661 | Cap, S Blade | |
| 28 | R651A | * Smooth Blade Assy | |
| 29 | R652A | * Serrated Blade Assy | |
| 30 | R644A | * Bowl Kit | |
| 31 | R670 | Rod, Bowl W/Drive-In Cap | |
| 32 | R670A | Bowl Rod w/Press Fit Cap | |
| 33 | R645 | Bowl | |
| 34 | R646A | Bushing Set w Bwl Lock Pin | |
| 35 | R646 | Lckg Bush Set w/Screws | |
| 36 | CL569 | Pusher Knob | |
| 37 | CL579 | No longer available | |
| 38 | CL576 | Large Pusher Assembly | |
| 39 | CL588 | Insert, Plastic | |
| 40 | R639M | Hinged Bracket Assy, 2 Mag | |
| 41 | R696 | Cont. Feed Lead Assy. | |
| 42 | CL594 | Sleeve, Plastic | |
| 43 | CL581 | Spring | |
| 44 | CL580 | Pusher Hinge Pin | |
| 45 | CL571 | Screw | |
| 46 | CL585A | Small Pusher(145MM) | |
| 47 | R636 | Cont Feed Lead | |
| 48 | CL523 | Hinge Pin Bushing | |
| 49 | CL586A | Latch, upper & lower | |
| 50 | R697 | * Continuous Feed Kit | |
| 51 | CL572 | Discharge Plate | |
| 52 | CL520 | Hinge Pin | |
| 53 | R693 | Rod, Mag Flux CF Atch | |
| 54 | R623 | Cont Feed Attachment | |
| 55 | CL523 | Hinge Pin Bushing | |
| 56 | CL573 | Stud Bolt, Latch | |
| 57 | R257 | Spring for Pin Assembly | |
| 58 | R632 | Pin, Locking | |
| 59 | C4912 | Locking Pin Knob | |
| 60 | C499 | Feed Attachment Bushing | |
| 61 | C498 | Feed Atchmnt Pin Bushing | |
| 62 | R199 | * Robo-Cart | |
| 63 | R476 | No Longer Available | |

robot coupe®

R6VN #1

| INDEX | REF. | DESIGNATION | Pricelist in : USD |
|----------------|-----------------------|------------------------------------------------------------------------|--------------------|
| 64 65 66 | R255 CL575 R475 | * Plate Rack * Plate Rack (wall mount) * Plate Rack (Individual) | |