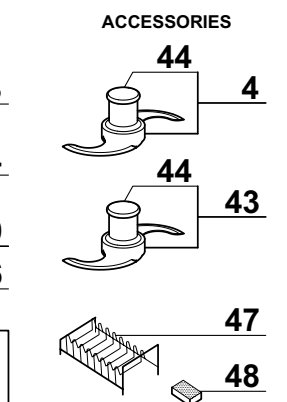
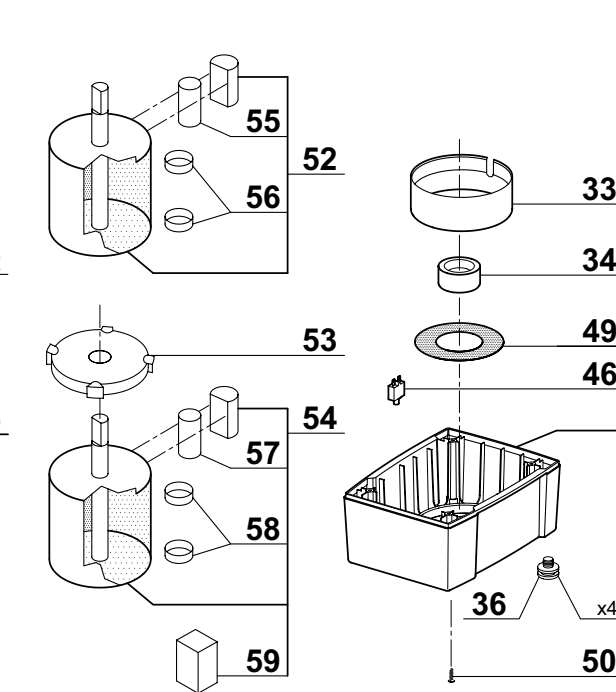
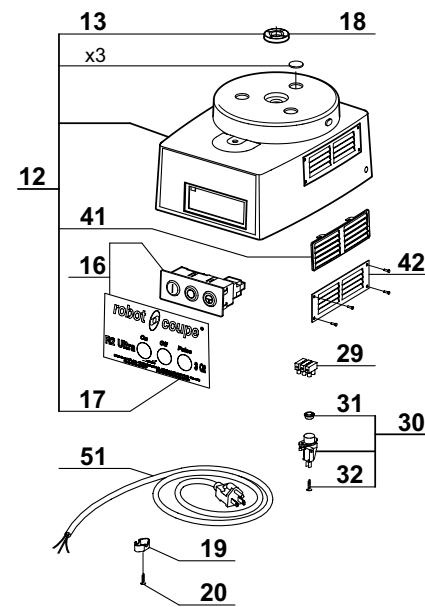
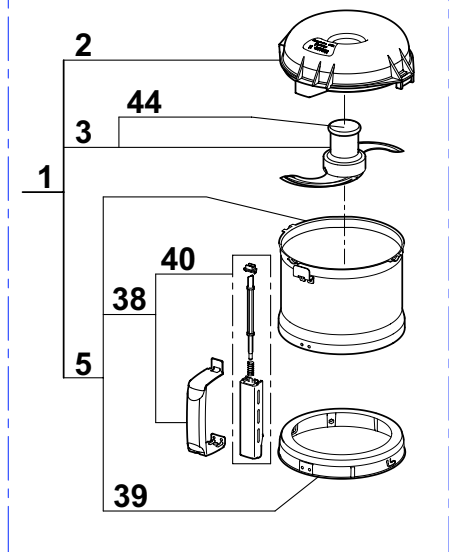
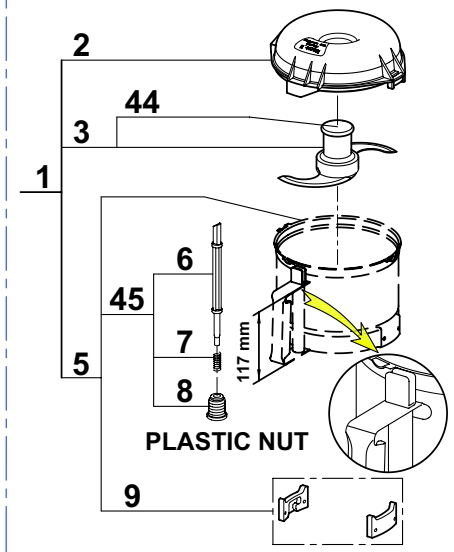
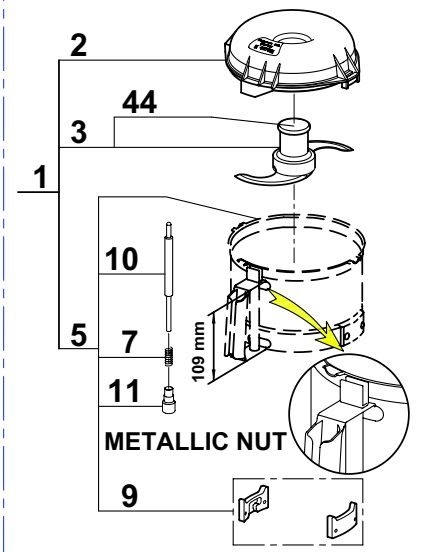


**WARNING :**

Select the spare parts in accordance with the bowl type.  
 As the complete bowl or the cutter attachment is fully interchangeable, for all types choose respectively item 5 or 1.

Type 1 H = 109mm	Type 2 H = 117mm	Type 3 Plastic Handle
------------------	------------------	-----------------------



Index	Pièce / Part	Description
1	27 243	CUTTER ATTACHMENT
2	105 236	CUTTER LID
3	27 055	STRAIGHT BLADE
4	27 061	FINE SERRATED BLADE
5	39 795	CUTTER BOWL ASSEMBLY
6	112 221	PLASTIC SAFETY ROD FOR BOWL H = 117 mm TYPE 2
7	100 964	SPRING
8	104 127	PLASTIC NUT FOR BOWL H = 117 mm TYPE 2
9	29 184	LOCKING PLATES ASSEMBLY
10	104 098	PLASTIC SAFETY ROD FOR BOWL H = 109m TYPE 1
11	104 050	STAINLESS STEEL NUT FOR BOWL H = 109m TYPE 1
12	39 109	MOTOR SUPPORT ASSEMBLY
13	501 010	SHAFT SEAL
16	39 107	CONTROL PANEL ASSEMBLY
17	407 670	FRONT PLATE
18	101 103	BOLT COVER
19	101 106	POWER CORD CLIP
20	200 005	SCREW 3,5 x 19
21	27 242	VEGETABLE SLICER ASSEMBLY
22	39 104	LID + PUSHERS ASSEMBLY
23	103 281	ROUND PUSHER
24	103 280	VEGETABLE PUSHER
25	118 592	VEGETABLE SLICER LID
26	29 858	VEGETABLE SLICER BOWL SAFETY ROD ASSEMBLY
27	103 288	SLINGER PLATE
28	102 699	VEGETABLE SLICER BOWL ASSEMBLY
29	19 190	TERMINAL BLOCK
30	29 919	MICROSWITCH ASSEMBLY
31	500 527	SEAL RING
32	200 003	SCREW 3,5 x 12,7
33	101 096	VENTILATION BAFFLE
34	101 095	ABSORBER
35	39 865	BASE ASSEMBLY
36	101 082	FOOT
38	39 763	BOWL HANDLE ASSEMBLY
39	39 753	LOCKING WASHER ASSEMBLY
41	104 122	VENT COVER
42	101 098	VENT COVER + RIVETS
43	27 138	SERRATED BLADE
44	117 058	BLADE CAP
45	39 220	SAFETY ROD ASSEMBLY FOR BOWL H = 117m TYPE 2
46	R286	CIRCUIT-BREAKER
47	R255	PLATE RACK
48	502 579	HONING STONE
49	R277A	SCREEN KIT
50	200 005	SCREW (BASE-M5 3,9X19)
51	R240	POWER CORD
52	R239	MOTOR 1/3HP 115V/60Hz
53	R239D.3	ADAPTER PLATE EM
54	R239D	MOTOR EM
55	R222	CAPACITOR F/C MOTOR (R2N)
56	R237	6203 BEARING R2 TOP/BTM
57	R239D.2	CAPACITOR
58	R237	6203 BEARING R2 TOP/BTM
59	R239D.1	STARTING RELAY