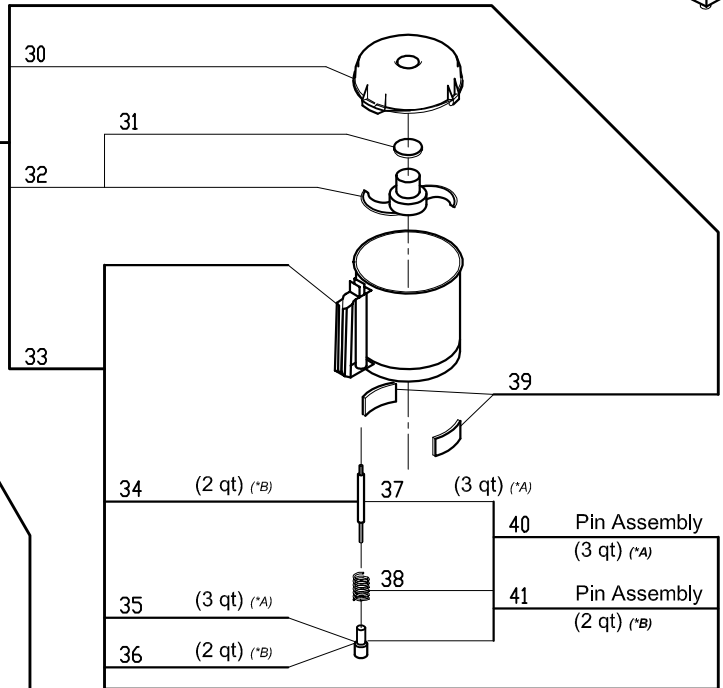
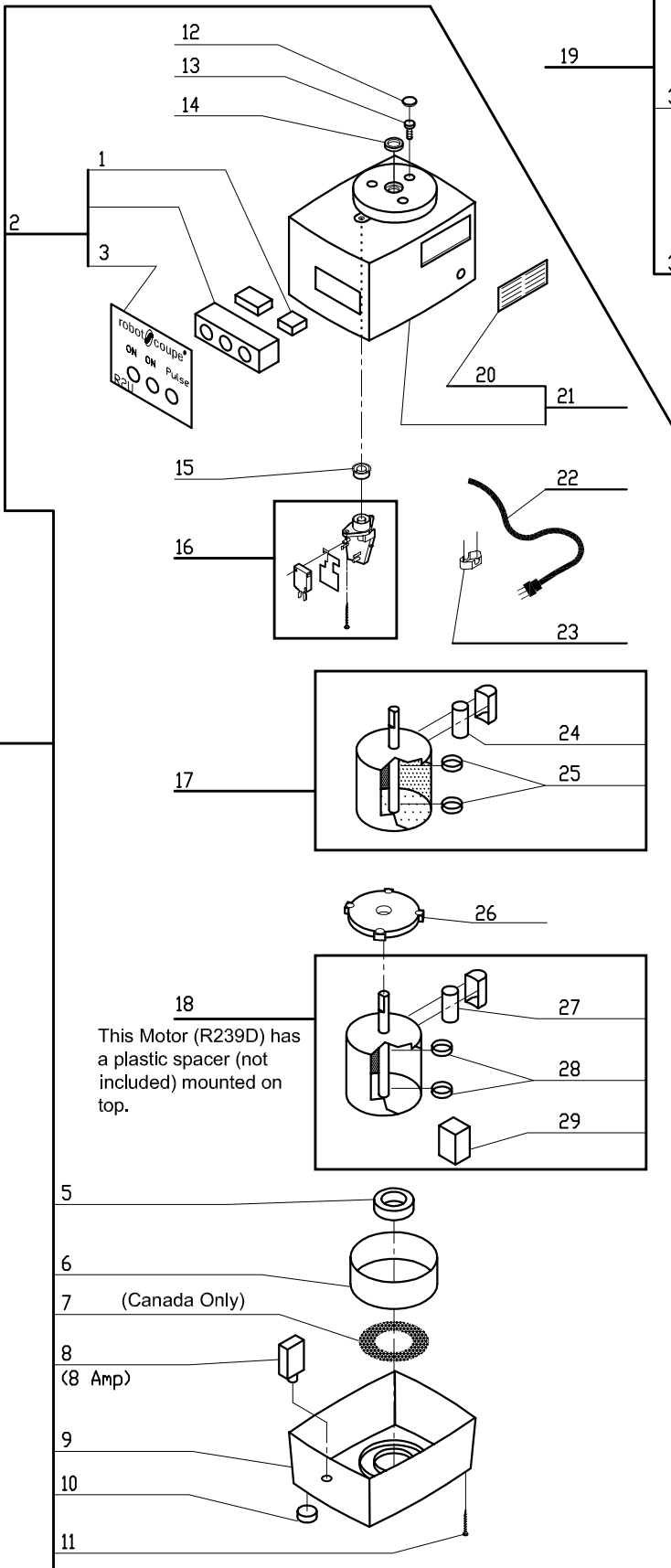
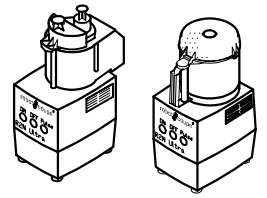
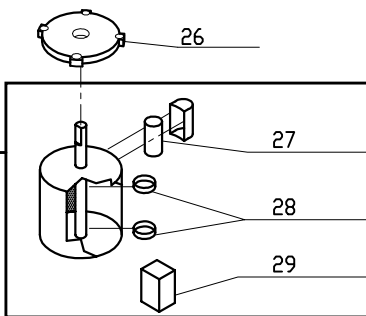
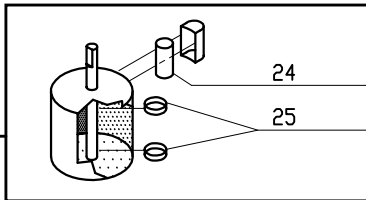


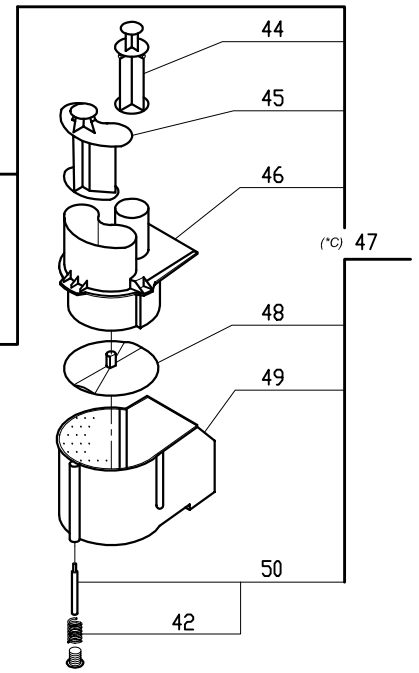
Serial Number Series- 245xxxxx03
 1- Speed, 120 Volt, 1 Phase, 60Hz., 1 HP.
 1725 RPM, 7 Amps



(*A) 3 Quart bowls are 6 inches tall.
 (*B) The 2 Quart bowls (NLA) are 5 1/4 inches tall.

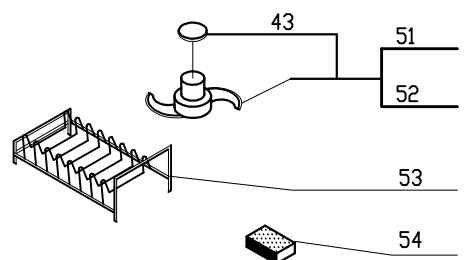


This Motor (R239D) has a plastic spacer (not included) mounted on top.



(*C) Any complete Feed Lead Set can be replaced with 27242

ACCESSORIES





R2N Ultra #2

| INDEX | REF. | DESIGNATION | Pricelist in : USD |
|-------|-----------|--|--------------------|
| 1 | R274 | Pulse Switch | |
| 2 | R264A | On/Off Pulse Switch Assy | |
| 3 | R230B | Front Data Plate(R2Ultra | |
| 4 | R246U | Assy Motor Base, R2U | |
| 5 | R265 | Bottom Cushion Bushing | |
| 6 | R278A | Baffle | |
| 7 | R277A | Screen Kit | |
| 8 | R286 | 8amp Breaker (R2ANN) | |
| 9 | 104124 | (B) R2 Base, Gray | |
| 10 | R101 | Foot | |
| 11 | R119 | Screw (Base-MS 3.9x19) | |
| 12 | R262 | Screw Cover | |
| 13 | R232A | Screw (Motor - MS) | |
| 14 | R118 | Motor Support Seal | |
| 15 | R225 | Rubber O Ring (Black) | |
| 16 | R115K | Safety Switch Assembly | |
| 17 | R239 | Mtr F/C 1/3HP 115V/6HZ | |
| 18 | R239D | Motor, EM | |
| 19 | 27243 | * (B) R2U S.S. Bowl Kit, 3qt | |
| 20 | R276A | Louvre (mtl) W/Rivits | |
| 21 | 39108 | (B) R2N Motor Support, 3qt | |
| 22 | R240 | Cord with Plug | |
| 23 | R104 | Strain Relief | |
| 24 | R222 | Capacitor F/C Mtr (R2N) | |
| 25 | R237 | 6203 Bearing R2 Top/Btm | |
| 26 | R239D.3 | Adapter Plate, EM | |
| 27 | R239D.2 | Capacitor | |
| 28 | R237 | 6203 Bearing R2 Top/Btm | |
| 29 | R239D.1 | Relay | |
| 30 | R204 | Cutter Bowl Lid | |
| 31 | R3030 | Cap Only, R301 S. Blade | |
| 32 | R203 | * Blade | |
| 33 | 104099 | (B) R2U S.S. Bowl Only,3qt | |
| 34 | R261A | Pin, SS Bowl | |
| 35 | 104050 | (B) Retaining Nut | |
| 36 | R258A | Retaining Nut | |
| 37 | 104098 | (B) Pin, 3qt S.S. Bowl | |
| 38 | R1776 | Spring | |
| 39 | R289 | Lckg Bush Set w/Screws | |
| 40 | Number NA | Description NA | |
| 41 | R242 | Pin Assy for Plastic Bowl | |
| 42 | R1776 | Spring | |
| 43 | R3030 | Cap Only, R301 S. Blade | |
| 44 | 103281 | (B) Small Pusher | |
| 45 | 103280 | (B) Large Pusher | |
| 46 | 118592 | (B) R2 Cont Feed Lead, Gray (replaces white) | |
| 47 | 27242 | * (B) R2N Cont Feed Kit, Gray | |
| 48 | 103288 | (B)Discharge Plate | |
| 49 | 102699 | (B) R2 Cont Feed Attach, Gray | |
| 50 | R242 | Pin Assy for Plastic Bowl | |
| 51 | R203D | * S Blade, Fine Serration | |
| 52 | R203E | * S. Blade Coarse Serrations | |
| 53 | R255 | * Plate Rack | |
| 54 | R248 | Honing Stone | |