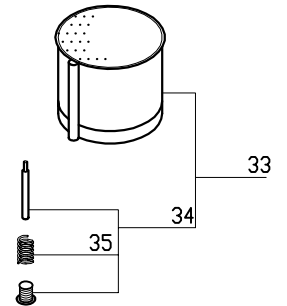
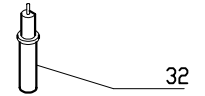
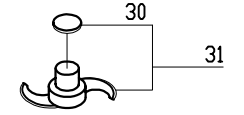
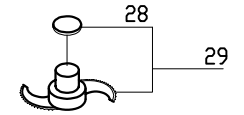
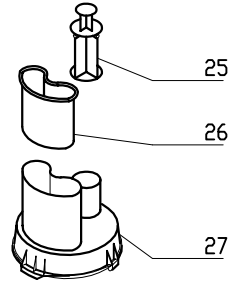
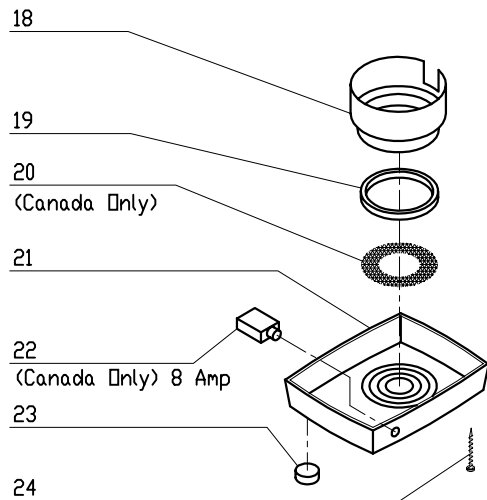
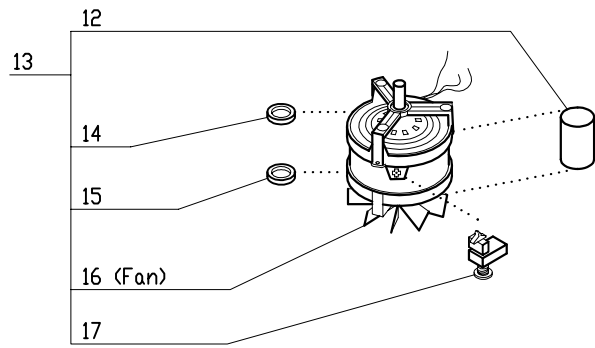
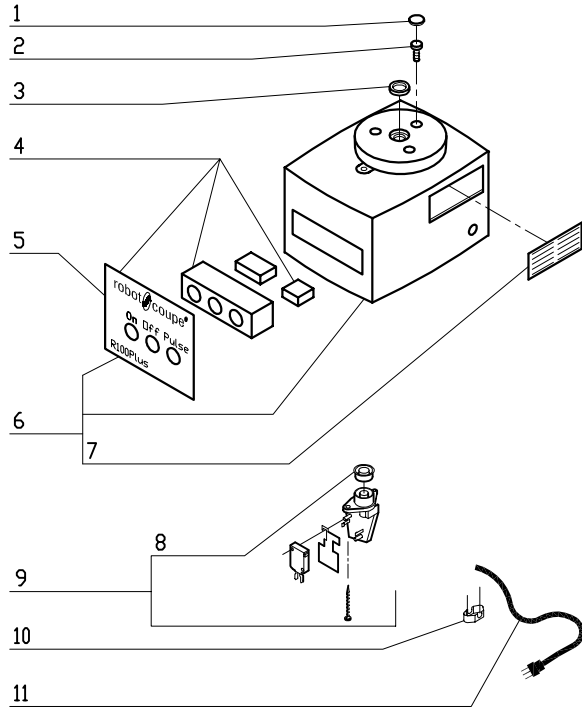
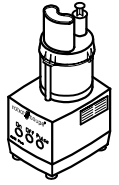


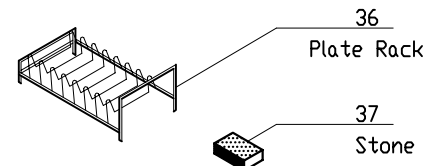
R100 Plus

1-Speed, 120 Volt, 1 Phase, 60Hz., 5/16 HP.

1725 RPM, 7 Amps



ACCESSORIES





R100 Plus

INDEX	REF.	DESIGNATION	Pricelist in : USD
1	R121	Screw Cover	
2	R120	Motor Support Screw	
3	R118	Motor Support Seal	
4	29891	(A) Switch Block Assy	
5	407575	(A) Front Data Plate, R100Plus	
6	39082	(A) Motor Support, R100Plus	
7	R276A	Louvre (mtl) W/Rivits	
8	R225	Rubber O Ring (Black)	
9	R115K	Safety Switch Assembly	
10	R104	Strain Relief	
11	R240	Cord with Plug	
12	R3012U	Capacitor/180MF 120/160	
13	R110	Motor	
14	R159	Top Bearing	
15	R1715	6201 Bearing	
16	R110.1	Fan Blade Only(R100,CL30,CL50,R300#B)	
17	R3009U	Relay MTRPH - 16/39	
18	R107	Baffle	
19	R106	Bottom Cushion Bushing	
20	R123	Description NA	
21	102697	Description NA	
22	R286	8amp Breaker (R2ANN)	
23	R101	Foot	
24	R119	Screw (Base-MS 3.9x19)	
25	119162	(A) Small Pusher, R100Plus	
26	112216	(A) Large Pusher, R100Plus	
27	112206	(A) Lid, R100Plus	
28	R3030	Cap Only, R301 S. Blade	
29	R157	* Serrated Blade	
30	R3030	Cap Only, R301 S. Blade	
31	R155	* Smooth Blade	
32	R151	Plate Support	
33	117900	(A) 2 1/2 Qt Clear Bowl, R100	
34	29900	(A) Safety Rod Assy	
35	R1776	Spring	
36	R255	* Plate Rack	
37	R248	Honing Stone	