

(530) 671-0000x14

1007 LIVE OAK BLVD., SUITE A4
YUBA CITY, CA 95991

PRIME RETAIL PAD SITE IN CHICO, CA

AVAILABLE FOR:

LAND LEASE OR BUILD TO SUIT

PAD SITE AT 2155 PILLSBURY ROAD CHICO, CA

CONVENIENTLY LOCATED IN THE CHICO K-MART SHOPPING CENTER

- Approximately 12,282 Sq. Ft. Lot. Up to 12,000 Sq. Ft. building may be possible with cross parking agreements.
- Freeway Accessible. Less than 0.2 mile from interchange off-ramp
- Traffic Counts: -Highway 99 62,000 +/- vehicles per day (Caltrans 2009)
-Cohasset Road 35,000 +/- vehicles per day (City of Chico 2006)
- Nearby retailers include: Michael's, Starbucks, Wendy's, Trader Joe's, Cinemark Theater, Umpqua Bank, Grocery Outlet and more.



ZAC REPKA CELL(530)870-7778

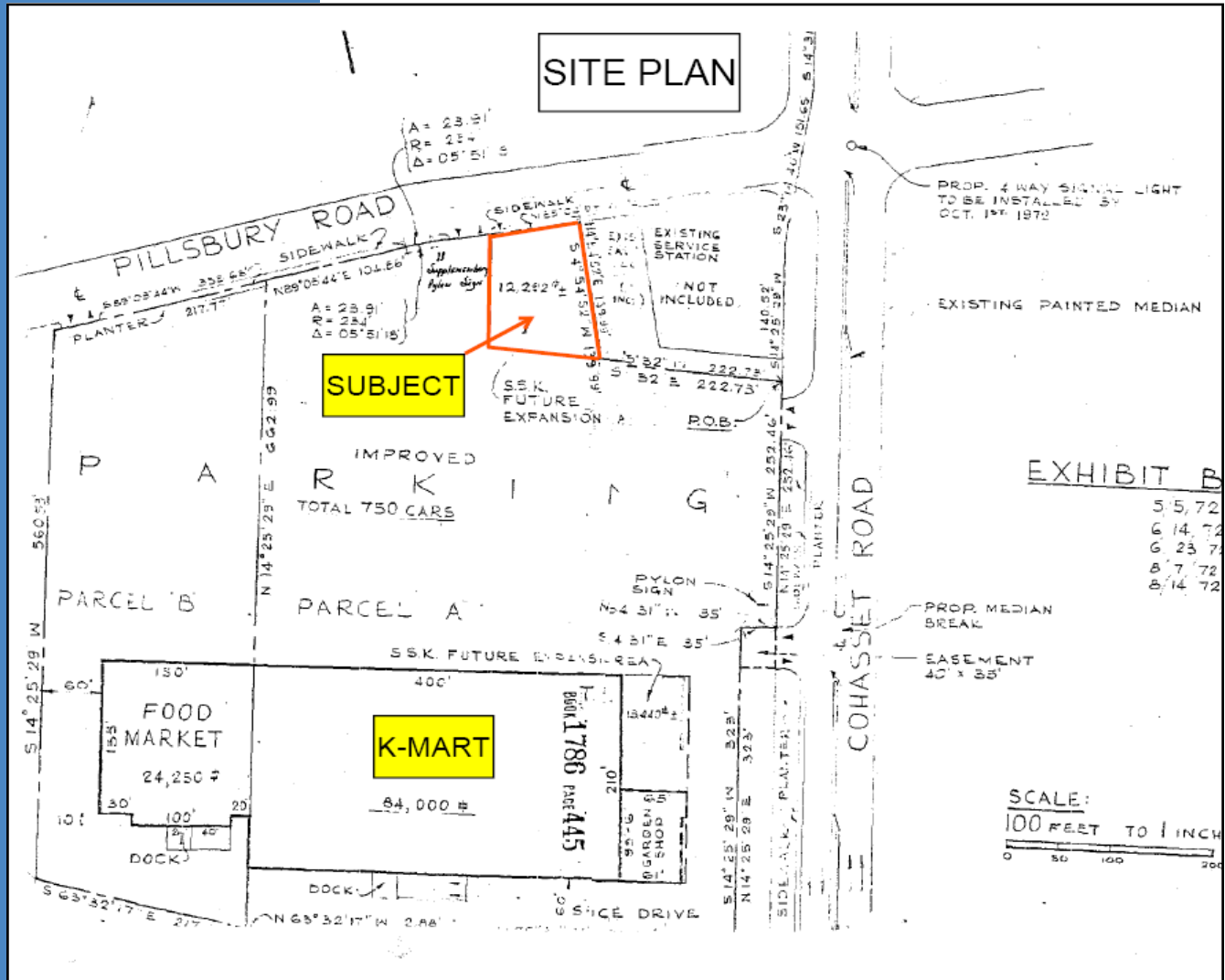
DRE:# 01451649

ZAC@WMMT.COM

The information contained in this offering was provided from sources deemed to be reliable however Broker or owner makes no representations or warranties of any kind, expressed or implied, regarding the physical condition, zoning classification, physical characteristics such as square footage, adequacy of electrical service or other utilities, building habitability or fitness, compliance with current building codes such as ADA, seismic, health & safety or any other governmental codes or regulations, structural integrity including water tightness of the roof or any other component of the buildings, environmental matters, income/expense information or any other aspect of the property or the buildings thereon. Prospective Buyers or Tenants shall be solely responsible for determining the suitability of the property and its condition for their intended use.



ZAC REPKA CELL(530)870-7778
ZAC@WMMT.COM



ZAC REPKA CELL(530)870-7778
ZAC@WMMT.COM