

VACANT LAND FOR SALE
NORTH BEALE ROAD
LINDA, CA
PRICE REDUCED!!!



- Location: 1712-1726 North Beale Road, South side of North Beale Road east of Hammonton-Smartsville Road, Linda, CA.
- Size: Five (5) lots totaling about 69520sf (1.60 ± acres)
- Zoning: Commercial and R2.
- Price: \$5.25/sf “As Is” = \$364,980.00. **\$3.60/sf - \$250,272.00**
- APN's: 021-132-025, 026, 027, 028, & 029
- Comments: Property is well situated with good visibility and access.

FOR MORE INFORMATION CONTACT:
FRED NORTHERN
(530) 671-0000

THE ABOVE INFORMATION WAS FURNISHED BY THE OWNER AND/OR FROM PUBLIC RECORDS, AND IS BELIEVED TO BE RELIABLE, HOWEVER, THIS INFORMATION IS NOT WARRANTED OR GUARANTEED ACCURATE OR CORRECT, AND NO WARRANTY OR GUARANTEE IS EXPRESSED OR IMPLIED. ALL INFORMATION IS SUBJECT TO INDEPENDENT VERIFICATION BY PROSPECTIVE BUYERS TO DETERMINE TO BUYERS SATISFACTION THE SUITABILITY OF THE PROPERTY FOR THEIR INTENDED USE.

COMMERCIAL REAL ESTATE BROKERAGE · CA BRE #00656378

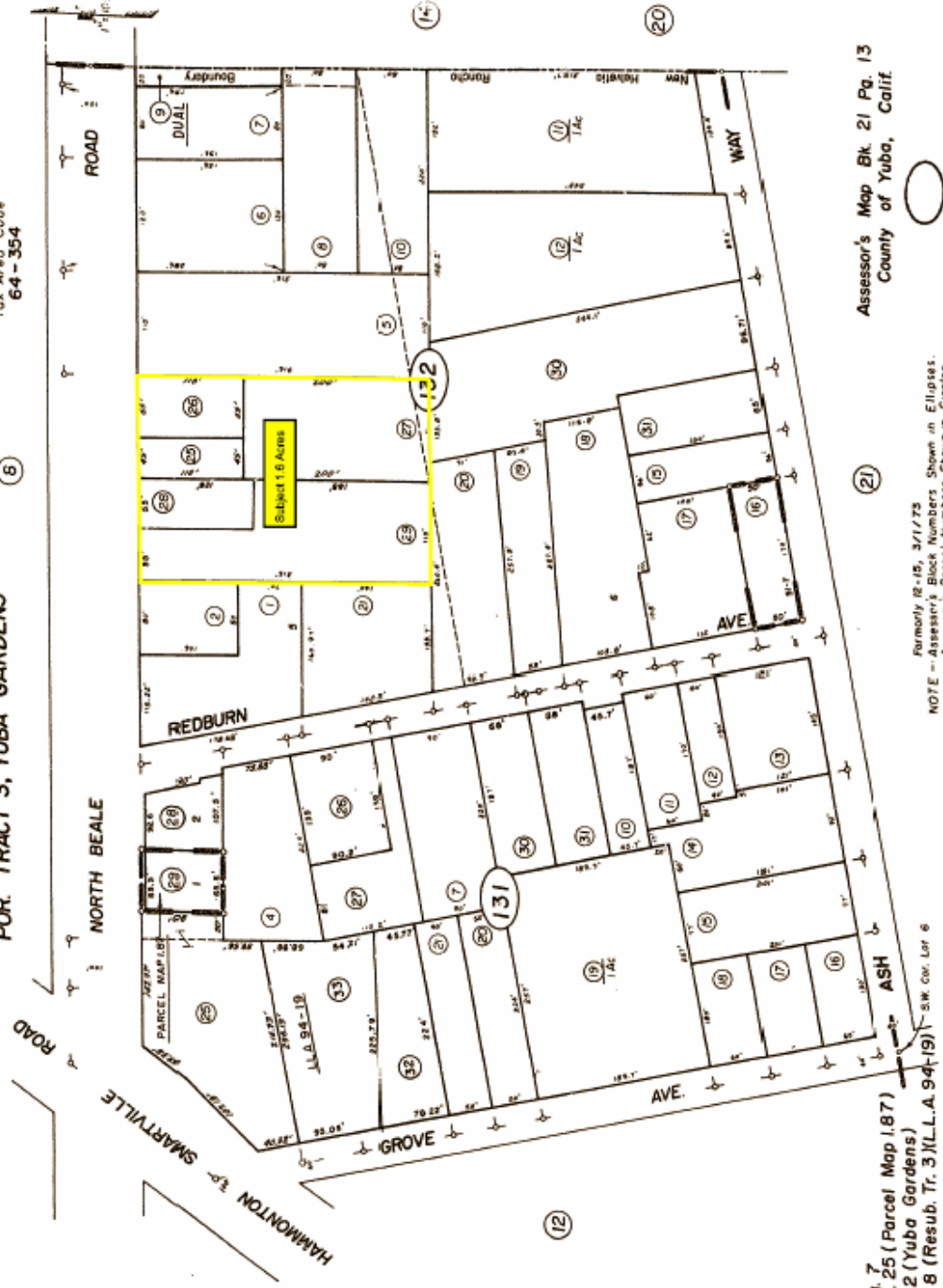


21-13

Tax Area Code
64-354

POR. TRACT 3, YUBA GARDENS

(8)



Assessor's Map Bk. 21 Pg. 13
County of Yuba, Calif.

NOTE - Formerly 12-15, 3/1/73
Assessor's Block Numbers Shown in Ellipses.
Assessor's Parcel Numbers Shown in Circles.

R.S. - Bk. 51, Pg. 7
R.S. - Bk. 13, Pg. 25 (Parcel Map 1.67)
R.S. - Bk. 3, Pg. 2 (Yuba Gardens)
R.S. - Bk. 3, Pg. 8 (Resub. Tr. 3) (L.L.A. 94-19) S.W. Cor. Lot 6

CODMAP, a product of BIT INCORPORATED